

EDIE CREEK



ANGUS



Selling

54 RUGGED 2 YEAR OLD BULLS

44 Black Angus • 7 Red Angus • 3 Black/Red Carriers

OCC SEMEN

*18th Annual
Bull Sale*

MARCH 8, 2025

SALE TIME: 1 P.M. CST

59018 Stoneridge Rd, Anola, Manitoba

WELCOME TO THE 18TH ANNUAL EDIE CREEK ANGUS RUGGED 2-YEAR-OLD BULL SALE!



2024 Was a great year at Edie Creek Angus. We had our best sale ever, grazed into November, made plenty of feed, & also hosted our second Howrey Angus Grazer's Edge Bull Sale online for the Howrey Angus cowherd that resides in Sterling, ND. We will be grazing mini-corn piles into February, then grazing a corn silage pile until spring thaw.

Another highlight was that we had the chance to be interviewed by Clay Conry for the Working Cows Podcast in late November, just before our Howrey Angus Grazer's Edge bull sale, and that podcast can be found on your Podcast app by searching "Working Cows", where we were featured on episode # 396:

<https://workingcows.net/ep-396-jonathan-and-stefan-bouw-a-journey-into-grass-based-genetics/>

In the interview, we share our breeding philosophies, and the journey we've taken to find structurally sound, functional, fertile breeding stock that help our customers maximize profit per acre, instead of just focusing on subjective metrics such as weaning weight per cow... While the discussion is geared towards explaining the genesis of our Howrey Angus operation, these same breeding goals and objectives have been shaped through our experiences building the Edie Creek Angus cowherd, which is comprised of successful infusions of Howrey Angus genetics...

2025 & onwards are looking to be some profitable years (we hope), which makes it a great time to prepare your cow herd to succeed in the leaner years that will follow. Input costs have been known to rise without re-adjusting downwards. Breeding decisions you make now could make or break the tough years to come. Now is a great time to buy bulls from a breeding program focused on Profit per Acre instead of production per cow.

At Edie Creek Angus we have been managing & selecting breeding stock in a low-input environment focused on year-round grazing for many years, culling for cattle that thrive and adapt to systems of management that bring profit per acre instead of high maintenance cattle that cost more to keep. We have recently added corn grazing to our extended grazing system, but for many years, the Edie Creek Angus cowherd was selected based on a very low energy, grain-free feeding system which often used bale grazing as the cornerstone. The benefits of the bale grazing system to our labour requirements and the huge improvements in soil health made it a wonderful system, but the drought of 2021 forced our hands into growing corn. The economics of yield as well as insurance protection have made it that we have decided to keep growing corn. We have, however, pushed our weaning time later, into the New Year so that the cows need to keep on lactating in order to work a bit harder within the higher energy ration that is the corn grazing reality! We are very excited to be hosting the bull sale at Edie Creek Angus headquarters in Anola again, it was a great success last year. The video-sale format, broadcast online again by TEAM auction will be held in our shop, facilitated by auctioneer Tyler Slawinski as well as Kirk Kiesman & Tyson Cook from the Ashern Auction Mart. We look forward to sharing a meal and some fellowship on March 8th at 1:00 pm!

Our bulls are looking great this year, and they will continue to supply you with the same Longevity, Fertility, soundness, and excellent temperaments that you've come to expect from an Edie Creek Angus 2-Year-Old bull. So come on back and build for the future with these carefully-developed bulls bred and selected from generations of maternal excellence!

Jonathan Boun

EDIE CREEK



ANGUS

18th Annual Bull Sale

MARCH 8
2025

SALE TIME: 1 P.M. CST

JONATHAN
(204) 471-4696

STEFAN
(204) 232-1620

ANOLA, MANITOBA

Connect with
us online:



www.EdieCreekAngus.com

Online Bidding Hosted By:



On offer:

54 BULLS

44 Black Angus • 7 Red Angus
3 Black/Red Carriers

SEMEN

4 straws of OCC Legacy 839L
4 straws of OCC Missing Link 830M
4 straws of OCC Magnum 749M

For the second time, the sale will be in Anola, Manitoba at Edie Creek Angus Headquarters. Please come to our Home yard to view the bulls - Type Edie Creek Angus in Google Maps, and it will bring you to us. The sale will be held in our heated farm yard shop. We are about 20 mins. East of Winnipeg.

VIDEO SALE LOCATION:

59018 Stoneridge Rd, Anola, Manitoba

VIDEO ONLY SALE: Videos of the sale animals will be played at the sale. Semen is stored at Edie Creek Angus, and can be picked up or shipped from there anytime after the sale.

SALE ORDER: Bulls will sell in catalog order.

VIEWING LOCATION: You are welcome to come in the days before the sale so that we can tour you through the cows & bulls. **59018 Stoneridge Road, Anola, Manitoba.**

AUCTIONEER: Tyler Slawinski • (204) 672-0450

RINGMEN:

Kirk Kiesman • (204) 768-0019
Tyson Cook • (204) 881-5659

VIDEO AUCTION: Videos of all the sale bulls are available. Please head to our website for links to videos and Team Live Auction Bidding.

SUPPLEMENT INFORMATION: Scrotal circumferences, hip height & weights will be available on sale day.

SEMEN INTEREST: Edie Creek Angus reserves a 1/3 semen interest & the right to collect semen for in-herd use on all bulls selling at your convenience and our cost.

LUNCH: Come early on sale day to look through the bulls and enjoy lunch with us! Lunch will be served in our heated shop.

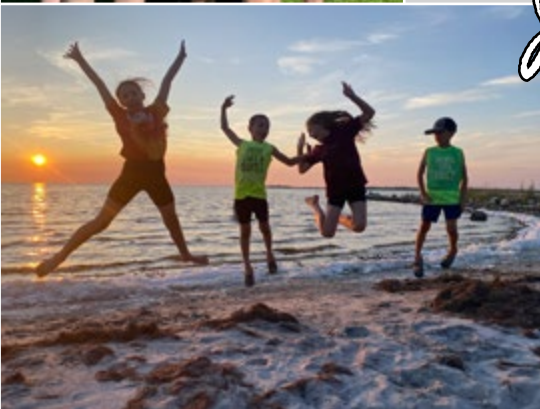
Please check our website for more information.

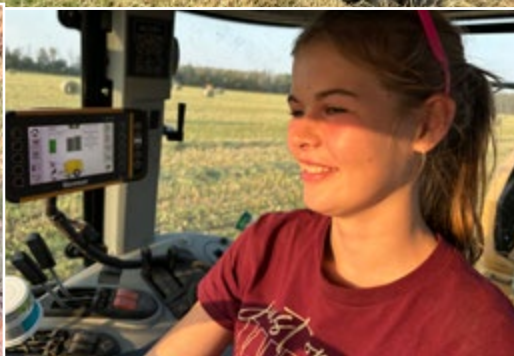


MARILYN & HERMAN BOUW



Jonathan's Family





*Stefan's
Family*



HERMAN & MARILYN BOUW



REFERENCE SIRES



OCC Gate Keeper 678G



OCC Dixie Erica 628W



OCC Blueprint 632B

R1 OCC GATE KEEPER 678G

TATT00: 678G DOB: March 30 2019 REG#: 2301837

| | |
|--------------|---|
| CALVING EASE | 4 |
| UDDER | 5 |
| FLESHING | 4 |
| AOD | 8 |

O C C MODERATOR 825M
O C C BLUEPRINT 632B
O C C DIXIE ERICA 628W

O C C GREAT PLAINS 943G
O C C DIXIE ERICA 638D
O C C DIXIE ERICA 721Y

O C C HEADLINER 661H
O C C DIXIE ERICA 845K
O C C PRACTICAL 841P
CHLOE DIXIE ERICA 7313
N BAR EMULATION EXT
DIXIE ERICA OF C H 1019
O C C PRACTICAL 841P
O C C DIXIE ERICA 808U

| | | | | | | |
|-------|---------|---------|--------|--------|----------|--------|
| EPD'S | CED: 10 | BW: 1.1 | WW: 31 | YW: 61 | MILK: 20 | MCE: 7 |
|-------|---------|---------|--------|--------|----------|--------|

- Gate Keeper is a friendly bull that we can walk up to and scratch. We are expecting great udders from this bull with him line bred to OCC Practical, and having the OCC Dixie Erica 628W cow in his pedigree, whom we have seen a number of times.
- 678G was the highest-priced bull we have ever bought, and he was one of the high selling bulls at the 2021 OCC sale. He represents balance in the gene pool, blending the Traveler, Rainmaker, Rito & Emulation lines that have built the OCC program.
- We brought Gate Keeper up from Kansas to add fleshing ability & udder quality to our gene pool. His first daughters calved in 2024 and had very tidy udders.
- We are very excited about his sons in this sale. They check off all the boxes - Moderate, Maternal, Easy Calving, Easy Fleshing.



Edie Creek North Star 64H



Edie Creek Great One 77F



Edie Creek Full Bore 34F
Sire of Edie Creek Full Bore 31H



Edie Creek Dixie Erica 71B

R2 EDIE CREEK NORTH STAR 64H

TATT00: 64H DOB: April 29 2020 REG#: 2188987

| | |
|--------------|-----|
| CALVING EASE | 4.5 |
| UDDER | 5 |
| FLESHING | 4 |
| AOD | 17 |

EDIE CREEK GREAT ONE 77F
EDIE CREEK GREAT ONE 77F
CH GEORGINA 626

O C C GREAT PLAINS 943G
O C C DIXIE ERICA 606S
O C C DIXIE ERICA 612H

O C C GREAT PLAINS 943G
O C C JUANADA 737L
O MR BANJO 41 147 LOGO
CH GEORGINA 369
N BAR EMULATION EXT
DIXIE ERICA OF C H 1019
D H D TRAVELER 6807
O C C DIXIE ERICA 803F

| | | | | | | |
|-------|--------|----------|--------|--------|----------|--------|
| EPD'S | CED: 9 | BW: -1.2 | WW: 39 | YW: 65 | MILK: 23 | MCE: 6 |
|-------|--------|----------|--------|--------|----------|--------|

- Edie Creek North Star 64H puts together two terrific animals for us: Sire Great One 77F was one of the best bulls we've ever raised, and his dam OCC Dixie Erica 606S would arguably be the best cow we've ever had.
- OCC Dixie Erica 606S raised her last calf as a 17yr old cow. She calved 1st cycle every year for us. She had incredible fertility, perfect feet, and a near-perfect udder. She left behind a strong cow family with daughters and grand daughters continuing on her tradition of elite fertility. We have flushed her and used a number of her sons over the years.
- The sire of North Star 64H is Edie Creek Great One 77F. 77F was a prolific breeder having a 97% breed up in our worst drought on 50 2-4yr old cows.
- North Star is double bred to OCC Great Plains 943G, whom we consider to be the greatest EXT son of all time, and Tim Ohlde points out that Great Plains "excels his sire EXT in every epd", which we would agree with and add that the disposition is better on Great Plains cattle than original EXT cattle. He is also line bred to the great Dixie Erica of CH 1019 cow 4 times! 1019 in the pedigree brings tidy udders as well as exceptional longevity & fertility.
- Use 64H to add body length, improve udders and feet, and refine your cow herd.

R3 EDIE CREEK FULL BORE 31H

TATT00: 31H DOB: April 23 2020 REG#: 2189017

| | |
|--------------|----|
| CALVING EASE | 5 |
| UDDER | 4 |
| FLESHING | 5 |
| AOD | 10 |

COLE CREEK FULL BORE 730
EDIE CREEK FULL BORE 34F
O C C DIXIE ERICA 606S

EDIE CREEK 839L 298 LEGACY 5Y
EDIE CREEK DIXIE ERICA 71B
CROWFOOT DIXIE ERICA 4895P

COLE CREEK BLACK CEDAR 46P
COLE CREEK S G JUMBOLEEN 76P
O C C GREAT PLAINS 943G
O C C DIXIE ERICA 612H
O C C LEGACY 839L
CROWFOOT ROSE LEE 5823R
CANE RIDGE CHALLENGER 2334
CROWFOOT DIXIE ERICA 2629M

| | | | | | | |
|-------|---------|----------|--------|--------|----------|---------|
| EPD'S | CED: 12 | BW: -1.5 | WW: 45 | YW: 79 | MILK: 23 | MCE: 10 |
|-------|---------|----------|--------|--------|----------|---------|

- 31H was a bull that brought us good calving ease and fleshing ability. His dam is a favourite in the herd: she was designated as an elite dam in, 2022 with 5 calves with an average wean ratio of 108. She had plenty of cream that gave her calves terrific early growth. This growth did not continue into a larger mature frame size, just good weaning weights.
- Maternal brother sired by Gate Keeper sells as a feature lot 27. An excellent maternal brother to 31H sold last year for \$10,000 to Black Rose Ranch. He also has maternal brothers working for Tri-Step Ranch and Doe River Colony as well as two great daughters in our herd. The ECA 71B cow has calved in the first cycle every year.
- Paternal Granddam is the excellent 606S cow, whose resumé in our herd will be hard to match for a long time.

REFERENCE SIRES



Loyning 7 Equinox - Sire of Loyning 7 Equinox 0009



Loyning Ester 9007 - Full sister to Loyning 7 Equinox 0009

R4

LOYNING 7 EQUINOX 0009

TATTOO: 0009H DOB: Feb. 23 2020 REG#: 2302849

| | |
|--------------|---|
| CALVING EASE | 4 |
| UDDER | 4 |
| FLESHING | 6 |
| AOD | 8 |

HORSE BUTTE 6141 OF 3141
LOYNING EQUINOX 7
JAD ESTER 3750

PAPA FORTE 1921
LOYNING ESTER 7008
HBR SHOSHONE ESTER 7133

HORSE BUTTE 1116 OF 3116
SHOSHONE ESTER 3141
M C C LOGAN
SHOSHONE ESTER 3128
PAPA OPTIMA 9818
PAPA ENVIOUS BLACKBIRD 8832
HORSE BUTTE 1126 OF 3128
SHOSHONE ESTER 3131

| | | | | | | |
|-------|--------|---------|--------|--------|----------|--------|
| EPD'S | CED: 8 | BW: 0.2 | WW: 47 | YW: 75 | MILK: 24 | MCE: 7 |
|-------|--------|---------|--------|--------|----------|--------|

- We bought Equinox from Loyning Angus in Bridger, Montana to provide more of the Shoshone line of genetics to our herd. We have been heavily using OCC Great Plains and the full sister to Great Plains (OCC Dixie Erica 907C) in our herd as cow makers, and have seen how the Shoshone gene pool can produce similar cattle. Equinox is linebred to the Shoshone Ester cow family. His dam is a productive cow who is very fertile and productive. His full sister, Loyning Ester 9007, pictured here too in the pasture at Loyning Angus, is a nearly perfect cow by our estimation. We have been especially pleased with the maternal intelligence of our first Loyning Equinox 0009 daughters. We also were very impressed with his paternal grandsire, Horse Butte 6141 of 3141, in the Dimond Angus Ranch breeding program in Wood, SD. The daughters of 6141 were hardy, feminine and fertile.



Red Edie Creek 19F



Dam of ECA 19F



OCC Easy Red 868A

R5

RED EDIE CREEK 19F

TATTOO: 19F DOB: April 22 2018 REG#: 2058778

| | |
|--------------|---|
| CALVING EASE | 4 |
| UDDER | 4 |
| FLESHING | 5 |
| AOD | 9 |

RED OCC EASY RED
RED OCC EASY RED 868A
RED OCC VANESSA 797Y

RED CROWFOOT MOONSHINE 8081U
RED EDIE CREEK LADY 45B
RED CROWFOOT LADY 6503S

RED OCC LINEBRED 801R
RED OCC VANESSA 829S
RED OCC RED ROCK 864U
RED OCC VANESSA 929T
CROWFOOT 6004S
RED CROWFOOT BRNDINA 6359S
RED CROWFOOT RAMBLER 1038L
RED CROWFOOT LADY 1131L

| | | | | | | |
|-------|--------|----------|--------|--------|----------|--------|
| EPD'S | CED: 9 | BW: -1.3 | WW: 35 | YW: 70 | MILK: 26 | MCE: 4 |
|-------|--------|----------|--------|--------|----------|--------|

- We were fortunate to raise and sell a half interest in Easy 19F to Gemstone Cattle Co.
- His sire OCC Easy Red 868A was a one-of-a-kind bull in Canada. We have found that OCC Easy Red 868A does phenotypically what we are trying to do with our Black Angus program in a linebred, genetically prepotent RED package! 868A will fix what the Red Angus breed needs fixing: foot quality, natural muscling ability & ease of fleshing on forage alone. He traces 9x to Dixie Erica 1019, the foundation cow of the black program at OCC and 5x to PCC Colorado Hobo. 868A also Leptin Genotype tested as "TT". A large chunk of our Red Angus herd are Easy Red 868A daughters. He will play a foundational role in our Red Angus herd for years to come.
- The dam of Easy 19F is a larger framed cow who is a daughter of our best Red Angus cow - Red Crowfoot Lady 6503S, who had a great udder & perfect feet. 6503S worked here until she was 16.



"We were honoured to be interview by Clay Conry on the Working Cows podcast - Episode # 396!! If you'd like to hear about our quest towards environmentally adapted, low input Angus cows that started 20+ years ago and the lessons we have learned along the way, take a listen!"

REFERENCE SIRES



Edie Creek Big Time 53F



Dam of 53F



ECA 848C



Red Calvo Nebula 67C

| R6 | | EDIE CREEK BIG TIME 53F | | | |
|--------------|---------|--------------------------------|--------------------|--------|---------------|
| | | TATT00: 53F | DOB: April 28 2018 | | REG#: 2042537 |
| CALVING EASE | 3.5 | O C C BIG TIME 746Z | | | |
| UDDER | 5 | EDIE CREEK BIG TIME 848C | | | |
| FLESHING | 4.5 | O C C DIXIE ERICA 693N | | | |
| AOD | 15 | CROWFOOT MACHO 4549P | | | |
| | | CROWFOOT VALLEY CJ ERICA 7723T | | | |
| | | CROWFOOT KAWICH 1758L | | | |
| | | O C C REAR END 751R | | | |
| | | O C C DIXIE ERICA 771R | | | |
| | | O C C HEADLINER 661H | | | |
| | | O C C DIXIE ERICA 907C | | | |
| | | O C C MAGNUM 749M | | | |
| | | CROWFOOT BLACKBIRD 2537M | | | |
| | | BASIN PARTNER 137H | | | |
| | | GLADWALL KAWICH LADY 717I | | | |
| EPD'S | CED: 13 | BW: -2.5 | WW: 35 | YW: 51 | MILK: 20 |
| | | | | | MCE: 12 |

- Big Time 53F puts a lot of longevity in a pedigree! His dam raised her last calf as a 15yr old cow. His sire's dam (693N) raised her last calf at 17yrs old. And both the dam and granddam of 693N raised calves till about 20 years old!!
- His sire, Big Time 848C has some really excellent daughters in our herd, and is now working at VeeTee Angus in Lloydminster.
- This bull is a great example of the result of focusing on profitable, maternal genetics. We allow our cattle to be sorted by keeping pressure on them in their environment. When cows prove themselves out and leave a good line of daughters, we are confident in the success her son will bring.
- There are no short cuts to proving out functionality and longevity. Genomics have not yet reliably proven to do so.

| R7 | | RED CALVO NEBULA 67C | | | | |
|--------------|---------|---------------------------|-------------------|-----------------------------|----------|---------|
| | | TATT00: 67C | DOB: June 15 2015 | REG#: 1957561 | | |
| CALVING EASE | 4.5 | RED BECKTON NEBULA M045 | | RED BECKTON NEPTUNE R2 K065 | | |
| UDDER | 4 | RED BECKTON NEBULA P P707 | | RED BECKTON BELGA K285 JL | | |
| FLESHING | 4.5 | RED BECKTON LANA M809 EP | | RED BECKTON EPIC K1 K863 | | |
| AOD | N/A | RED BECKTON NEBULA P P707 | | RED BECKTON LANA K253 DM | | |
| | | RED CALVO ROSE 8Z | | RED BECKTON NEBULA M045 | | |
| | | RED BECKTON ROSE U272 JJ | | RED BECKTON LANA M809 EP | | |
| | | | | RED BECKTON JUNO N493 | | |
| | | | | RED BECKTON ROSE G345 JL | | |
| EPD'S | CED: 14 | BW: -2.6 | WW: 41 | YW: 75 | MILK: 24 | MCE: 10 |

- We purchased 67C after he had served a good career at Gemstone Cattle Co.
- 67C adds some frame size but keeps the Birthweights down.
- Here is what Gemstone Cattle Co. says about the bull: "67C is a double bred P707 son out of a great Beckton cow. 67C stays fat all year long on grass and hay. We are very pleased with the natural fleshing ability of his calves."



WHY BUY EDIE CREEK BULLS?

There's No Free Lunch! We are over 20 years along in our journey of genetic progress and have learned many lessons on the way! We've learned that there is no such thing as a "free lunch": not in physics, economics, or in producing beef cattle. The math is simple. The more time and money you invest into your cattle the more you must get out of them. Solar Energy and Hybrid Vigour are the closest things we have to a "free lunch", so we need to maximize their cumulative benefits, with cow herds that efficiently turn low quality forages (grass) into high quality protein (beef). Tighten up the gene pool in your cow herd and cross them with some terminal bulls to get some free pounds! Before the drought of 2021, winter or summer, our cows took care of their own daily needs for over a decade on a zero starch, forage-only program. We have used this as a selection pressure on our cow herd. Not all cows are built to thrive and rebreed on a forage-only diet. We have moved forward with the cow families that remain. They are fertile, moderate 1250lb cows that maintain excellent udders while calving on pasture, and carefully mother their calves!

Stacking Teenage Cows in The Pedigree To build on a foundation of longevity, we use Herdsires that have dams and granddams that have produced calves well into their teens. The oldest dam (recently departed) would be 20 years old OCC Dixie Erica 693N and her dam produced until she was 19 years old.

Reproduction is the most important factor affecting profitability. We have tightened the screws on reproductive longevity by shortening our breeding season and using multi-sire breeding groups. Heifers are exposed to bulls for 45 days, and the cows see bulls for 50 days. The two main cow herds had Angus bulls for the first 30 days, and a Fleckvieh bull for the last cycle—thus ensuring only the most fertile females produce offspring that we select purebred parent stock from. Multi-sire breeding groups ensure that the most fertile bulls get the job done — another step in improving fertility. After all, reproduction is 5x more important than growth rate, and 10x more important than carcass quality when it comes to your profit.

The Edie Creek Gene Pool Our gene pool stems from proven descendants of renowned maternal bloodlines such as Traveler, Emulation, Shoshone, Quantum & Wye that have thrived in low-input environments across the continent. We stack cows and cow families in our pedigrees that have raised calves every year into their teens. This enables us to offer a more consistent pen of bulls every year: pre-potently bred bulls which stamp a consistent pen of calves, including daughters that can be counted on to become reliable mama cows.

Our Cattle Are Not Perfect. But They Are Bred For A Specific Purpose Cattle have vast complexities & wide-ranging genetic expressions in differing environments. Pursuing profitable, ranch adapted cattle requires the same maternal performance traits, no matter where you are. With the complexities of genetics, we rely on animals that have performed in the environment we ask them to, to show us who to select as breeding stock. This method of selection has taught us a lot over the years. Our cattle are not perfect. But they are bred for a specific purpose. Time and experience has shown performance and carcass EPD's can not guide the selection of a functional cowherd in real-world conditions, and are in fact antagonistic traits to fertility, longevity and functionality in the cow herd. Many breeding programs claim their bulls can do all things - Maximizing growth and offering maternal greatness in one package. There is no moderate-framed cow herd that comes from using bulls bred for maximizing growth. You can't get a 1250lb cow if the bred

heifer is weighing 1250lbs. Same goes for the bulls you use - 2yr old bulls should not weigh 1800-2000 lbs if you expect their daughters to be moderate. Form Follows Function!

Bigger Weaning Weights Doesn't Equate to More Profit Feeding big cows means big maintenance(feed) costs every year. Bigger weaning weights ideally will be achieved from using the benefits of hybrid vigour and Terminal Sires being mated to moderate cows. Keeping replacement heifers out of Terminal (growth) bulls that have never been selected for cowherd FERTILITY will steal your chance at optimizing profit, it results in reduced fertility and cow-herd frame size creep that costs you more to feed every year! Terminal-Maternal Cross- breeding systems are the most efficient way to produce beef cattle. Profitability falls by the way-side when chasing maximum production levels.

Establish an Efficient, Maternal "Cowherd Factory" For Yourself! Our bulls are bred with generations of fleshing ability, fertility, capacity, correct feet, longevity and udder quality. Edie Creek bulls will sire calves that are born easily and nurse quickly. They will establish an efficient, maternal "Cowherd Factory" from which you can then mate with terminal sires to add hybrid vigour performance and the "flavour of the day" in hide colour. Doing this will create a functional, long-living cowherd able to wean calves with maximum efficiency in your commercial ranch environment.

Carefully Developed - Built To Breed More Cows When you buy 2-year-old bulls from Edie Creek Angus, you get a carefully developed breeding bull. You can turn these Rugged 2-yr olds out and expect them to breed more cows than yearling bulls & come back in better shape. They are more durable and last under real-world breeding conditions. Longevity is as important in your Herd Bulls as it is in your cowherd! By developing them for an additional year it allows us to sort them in our pastures instead of yours.

Customer Focused Our mission is to improve the quality of life and profitability of our customers. Cows that work for you, that thrive in the elements. Designed to work in breeding systems that allow you to optimize beef production per acre by providing efficient cows that can be terminally bred to produce marketable calves as needed. Improvement of your profitability means we have been successful.

We really enjoy talking about beef production, so please give us a call or stop by for a tour and we can talk about beef production systems, our breeding program, or any of the cattle for sale.

Stefan Boun





Edie Creek Big Time 53F • Sire of Lots 1-3

“Too many people view milk as a maternal trait. I view it as “anti-maternal.” “Maternal” is fertility, maternal calving ease, good mothering instinct and survivability. The rancher who develops good cows adapted to a low-input environment, sized right with moderate milking ability and with good hybrid vigor will soon have a high percentage of his/her cows calving in the first 30 days of calving. This rancher can sell a few cows to the rancher who wants to buy replacements, use a terminal cross bull and sell all the calves.”

- Burke Teichert

| LOT 1 | | EDIE CREEK BIG TIME 10L | | | | |
|-----------------|---------|--------------------------------|--------------|------------------------|----------|---------------|
| | | TATT00: ECA 10L | | DOB: April 30 2023 | | REG#: 2349157 |
| BORN 1ST CYCLE? | YES | EDIE CREEK BIG TIME 848C | | O C C BIG TIME 746Z | | |
| CALVING EASE | 4 | EDIE CREEK BIG TIME 53F | | O C C DIXIE ERICA 693N | | |
| UDDER | 4.5 | CROWFOOT VALLEY CJ ERICA 7723T | | CROWFOOT MACHO 4549P | | |
| FLESHING | 5 | MH TUBBY 56 | | CROWFOOT KAWICH 1758L | | |
| | | EDIE CREEK 56 ERICA 126D | | LODGE OF WYE | | |
| | | EDIE CREEK 518R 51N ERICA 1Y | | M H MINA 836 | | |
| | | | | HILLFIRE LEGACY 518R | | |
| | | | | NEW FORCE ERICA 51N | | |
| EPD'S | CED: 10 | BW: -1.4 | WW: 31 | YW: 45 | MILK: 19 | MCE: 11 |
| ACT. DATA | BW: 71 | DAM BW: 78 | DAM WT: 1125 | AOD: 8 | | |

- We are really pleased with our Edie Creek Big Time 53F calves. And this Lot 1 Bull is a good example of why. He's got a good Angus head, with solid fleshing ability & big rib capacity. The feet on the 53F sons are above average in quality.
- Heifer Bull. This lot 1 bull is out of a MH Tubby 56 daughter. We did not know how good of a bull Tubby was until it was too late. We really should have collected semen on him...
- A key for us in breeding cattle is to be happy with cows that are good enough. Big Time 53F has a pedigree full of those kinds of cows.

| LOT 2 | | EDIE CREEK BIG TIME 15L | | | | |
|-----------------|---------|--------------------------------|--------------|------------------------|----------|---------------|
| | | TATT00: ECA 15L | | DOB: May 02 2023 | | REG#: 2349165 |
| BORN 1ST CYCLE? | YES | EDIE CREEK BIG TIME 848C | | O C C BIG TIME 746Z | | |
| CALVING EASE | 4 | EDIE CREEK BIG TIME 53F | | O C C DIXIE ERICA 693N | | |
| UDDER | 5 | CROWFOOT VALLEY CJ ERICA 7723T | | CROWFOOT MACHO 4549P | | |
| FLESHING | 3.5 | EDIE CREEK BIG TIME 848C | | CROWFOOT KAWICH 1758L | | |
| | | EDIE CREEK FRANCES 178H | | O C C BIG TIME 746Z | | |
| | | MH FRANCES 186 | | O C C DIXIE ERICA 693N | | |
| | | | | MH TITAN 752 | | |
| | | | | MH FRANCES 6121 | | |
| EPD'S | CED: 12 | BW: -1.2 | WW: 50 | YW: 74 | MILK: 22 | MCE: 10 |
| ACT. DATA | BW: 68 | DAM BW: 88 | DAM WT: 1180 | AOD: 4 | | |

- This is a neat double bred Big Time Bull. We used him to breed cows last summer. We debated about keeping him, but his dam just weaned a very promising brother that we plan on using.
- His dam is Stefans favourite 848C daughter. Her dam was a really good Titan daughter. She is plenty feminine with a very tidy udder and feet. She's off to a great start with calving every year so far in the first cycle.
- If you would like to improve your cow herds longevity and functionality traits, this would be a good bull to use.
- A picture of granddam MH Frances 186 can be found atop page 25 on the right hand side.



OCC Legacy 839L • Maternal Grandsire of Lot 3

FERTILITY DRIVES PROFITABILITY

81% of the bulls this sale bulls were born in the first cycle!

Keeping replacement heifers out of Terminal (growth) bulls that have never been selected for cowherd FERTILITY will steal your chance at optimizing profit—Profitability falls by the way-side when chasing maximum production levels.

| LOT | 3 | EDIE CREEK BIG TIME 178L | | | | |
|-----------------|--------|---|------------------------|---------|----------|--------|
| | | TATT00: ECA 178L DOB: May 30 2023 REG#: 2349724 | | | | |
| BORN 1ST CYCLE? | NO | EDIE CREEK BIG TIME 848C | O C C BIG TIME 746Z | | | |
| CALVING EASE | 2 | EDIE CREEK BIG TIME 53F | O C C DIXIE ERICA 693N | | | |
| UDDER | 5 | CROWFOOT VALLEY CJ ERICA 7723T | CROWFOOT MACHO 4549P | | | |
| FLESHING | 4.5 | O C C LEGACY 839L | CROWFOOT KAWICH 1758L | | | |
| | | EDIE CREEK 839L ELISEVA 18Y | O C C ECHELON 857E | | | |
| | | EDIE CREEK ELISEVA 119T | O C C DIXIE ERICA 960E | | | |
| | | | O C C MOONSHINE 740M | | | |
| | | | CROWFOOT ELISEVA 1783L | | | |
| EPD'S | CED: 6 | BW: 1 | WW: 34 | YW: 56 | MILK: 24 | MCE: 4 |
| ACT. DATA | BW: 90 | DAM BW: 78 | DAM WT: 1380 | AOD: 13 | | |

- We believe the best way to improve longevity and fertility is by stacking teenage cows in a pedigree. This bull might do that the best out of all the bulls in this sale.
- His dam raised calves into her teens and calved 1st cycle 10 out of 11 times. The cows that are closest up in the pedigree of his sire raised calves until they were 15 and 17yrs old!
- Phenomenal cow-maker bull. This bull would have been a great asset to our program if we had used a bull of his quality 20 years ago. If we had started with a bull like this, it would have saved us a lot of headaches!

| LOT | 4 | EDIE CREEK BIG TIME 177L | | | | |
|-----------------|--------|---|------------------------|---------|----------|--------|
| | | TATT00: ECA 177L DOB: May 31 2023 REG#: 2349723 | | | | |
| BORN 1ST CYCLE? | NO | EDIE CREEK BIG TIME 848C | O C C BIG TIME 746Z | | | |
| CALVING EASE | 2 | EDIE CREEK BIG TIME 53F | O C C DIXIE ERICA 693N | | | |
| UDDER | 4 | CROWFOOT VALLEY CJ ERICA 7723T | CROWFOOT MACHO 4549P | | | |
| FLESHING | 4 | O C C WORTHY MAN 967W | CROWFOOT KAWICH 1758L | | | |
| | | EDIE CREEK ERICA 61B | O C C SENTINEL 714S | | | |
| | | EDIE CREEK 712U ERICA 101Y | O C C DIXIE ERICA 859T | | | |
| | | | SITZ ONWARD 712U | | | |
| | | | CROWFOOT ERICA 1652L | | | |
| EPD'S | CED: 6 | BW: 0.5 | WW: 39 | YW: 65 | MILK: 21 | MCE: 7 |
| ACT. DATA | BW: 89 | DAM BW: 77 | DAM WT: 1280 | AOD: 10 | | |

- This bull is a tick taller than the average bull in the group. Scrotals, weights and Hip height measurements will be available online in a supplement sheet prior to the sale day and at the sale.
- His dam goes back to the Erica 1652L cow that made a very strong cow family for us. She ended her career with 16 calves weaned.
- Dam 61B was an exceptionally intelligent cow who had amazing mothering instincts without being aggressive towards people! 61B calved 8 out of 10 times in the 1st cycle.



Sinclair Executive 9XV2 • Maternal Grandsire of Lot 5

| LOT | 5 | EDIE CREEK GATE KEEPER 143L | | | | |
|-----------------|--------|--|--------------|--------|----------|--------|
| | | TATT00: ECA 143L DOB: May 20 2023 REG#: 2349676 | | | | |
| BORN 1ST CYCLE? | YES | O C C BLUEPRINT 632B O C C GATE KEEPER 678G O C C DIXIE ERICA 638D | | | | |
| CALVING EASE | 2 | O C C DIXIE ERICA 638D | | | | |
| UDDER | 5 | SINCLAIR EXECUTIVE 9XV2 EDIE CREEK BETSY 68G | | | | |
| FLESHING | 5 | EDIE CREEK BETSY 12E | | | | |
| | | O C C MODERATOR 825M O C C DIXIE ERICA 628W O C C GREAT PLAINS 943G O C C DIXIE ERICA 721Y N BAR EMULATION EXT V722 N BAR PRIMROSE Y3051 MH TUBBY 56 EDIE CREEK BETSY 96B | | | | |
| EPD'S | CED: 4 | BW: 2.1 | WW: 45 | YW: 81 | MILK: 19 | MCE: 3 |
| ACT. DATA | BW: 87 | DAM BW: 76 | DAM WT: 1355 | AOD: 5 | | |

- This bull is a Stud! He is long and smooth with a proud eye.
- This bulls pedigree shows three shots of EXT and 2 shots of OCC Legacy 839L. The Betsy 12E cow has the next bull in the sale, making this bull a 3/4 brother to lot 6!
- This is only the second year we have offered sons of OCC Gate Keeper 678G. Last year the high selling Gate Keeper son sold for \$11,500.



| LOT | 6 | EDIE CREEK GATE KEEPER 107L | | | | |
|-----------------|--------|--|--------------|--------|----------|--------|
| | | TATT00: ECA 107L DOB: May 14 2023 REG#: 2349468 | | | | |
| BORN 1ST CYCLE? | YES | O C C BLUEPRINT 632B O C C GATE KEEPER 678G O C C DIXIE ERICA 638D | | | | |
| CALVING EASE | 2.5 | O C C DIXIE ERICA 638D | | | | |
| UDDER | 4 | MH TUBBY 56 EDIE CREEK BETSY 12E | | | | |
| FLESHING | 5 | EDIE CREEK BETSY 96B | | | | |
| | | O C C MODERATOR 825M O C C DIXIE ERICA 628W O C C GREAT PLAINS 943G O C C DIXIE ERICA 721Y LODGE OF WYE M H MINA 836 EDIE CREEK 839L 298 LEGACY 5Y EDIE CREEK 839L BETSY 3X | | | | |
| EPD'S | CED: 7 | BW: 1.5 | WW: 36 | YW: 69 | MILK: 23 | MCE: 5 |
| ACT. DATA | BW: 83 | DAM BW: 77 | DAM WT: 1370 | AOD: 7 | | |

- Here is another good OCC Gate Keeper son. He is a 3/4 brother to the lot 5 bull. 107L has some big rib capacity that came through from his dam's sire MH Tubby 56.
- His dam has calved first cycle every year and is one of the fattest cows in our herd. Every calf she has raised has made the keeper pen. She sold a good bull in our 2023 sale to Sirett Ranching at Lloydminster.
- Not sure where this bull picked it up from, but he can be a little nervous when he is on his own.

| LOT | 7 | EDIE CREEK GATE KEEPER 54L | | | | |
|-----------------|--------|--|--------------|---------|----------|--------|
| | | TATT00: ECA 54L DOB: May 07 2023 REG#: 2349247 | | | | |
| BORN 1ST CYCLE? | YES | O C C BLUEPRINT 632B O C C GATE KEEPER 678G O C C DIXIE ERICA 638D | | | | |
| CALVING EASE | 2 | O C C DIXIE ERICA 638D | | | | |
| UDDER | 5 | EDIE CREEK GREAT ONE 79Y EDIE CREEK FLORA 1B | | | | |
| FLESHING | 4.5 | EDIE CREEK 38J FLORA 75Z | | | | |
| | | O C C MODERATOR 825M O C C DIXIE ERICA 628W O C C GREAT PLAINS 943G O C C DIXIE ERICA 721Y O C C GREAT PLAINS 943G O C C JUANADA 737L O C C WORTHY MAN 967W LENLOOK FLORA 26J | | | | |
| EPD'S | CED: 4 | BW: 2.1 | WW: 40 | YW: 73 | MILK: 21 | MCE: 4 |
| ACT. DATA | BW: 94 | DAM BW: 62 | DAM WT: 1370 | AOD: 10 | | |

- This is a terrific bull. He almost should've stayed in our herd bull pen. If you like our breeding program, but want a little more frame size than our average, a bull like this out of the Flora cow family will fit the bill.
- His dam Flora 1B has been a perfect cow for us. She has one of the best udders in the herd, and we've possibly never had a 10-yr old cow with as good of an udder as 1B. Her overall structure is flawless and she's calved first cycle every year. She will be 11yrs old in a few months. Every son she has raised has sold well in our sale, and we have kept her daughters.
- This bull has some good line breeding in his pedigree, which will help reduce the variability you see in his calf crop. Use this bull to fix udders and increase fertility.

**OPTIMIZATION TO YOUR ENVIRONMENT
IS A KEY TO PROFITABILITY.**



Edie Creek Flora 1B • Dam of Lot 7



D D A Melisa 545 • Maternal Granddam of Lot 8

| LOT | 8 | EDIE CREEK GATE KEEPER 168L | | | |
|-----------------|-----|---|-------------------------|--|--|
| | | TATT00: ECA 168L DOB: May 28 2023 REG#: 2349699 | | | |
| BORN 1ST CYCLE? | NO | O C C BLUEPRINT 632B | O C C MODERATOR 825M | | |
| CALVING EASE | 2 | O C C GATE KEEPER 678G | O C C DIXIE ERICA 628W | | |
| UDDER | 4 | O C C DIXIE ERICA 638D | O C C GREAT PLAINS 943G | | |
| FLESHING | 4.5 | DDA EMBLAZON 27C | O C C DIXIE ERICA 721Y | | |
| | | MH MELISA 39 | O C C EMBLAZON 854E | | |
| | | D D A MELISA 545 | D D A MELISA 824 | | |
| | | | BEAR OF WYE UMF 6591 | | |
| | | | D D A MELISA 115 | | |

| EPD'S | CED: | BW: 3.8 | WW: 29 | YW: 55 | MILK: 21 | MCE: |
|-----------|--------|-------------|--------------|---------|----------|------|
| ACT. DATA | BW: 96 | DAM BW: N/A | DAM WT: 1260 | AOD: 11 | | |

- Here's a bull out of a cow that's royally bred. Cows like her are what got us convinced that the Howrey Angus herd was the top quality we could find.
- Melisa 39 came up to Canada as a middle aged cow and will be 12yrs old in a few months. Our Howrey Angus cow herd in North Dakota was built around 4 foundation cow families and DDA Melisa 545 was one of them.
- The 3 sons of Melisa 39 that we've sold have each been top-notch bulls. This Gate Keeper son should be a fantastic sire of excellent cows also. This was her first calf not born in the 1st cycle here (missed it by a day), but her 2024 born calf was back in the 1st cycle!

| LOT | 9 | EDIE CREEK GATE KEEPER 169L | | | |
|-----------------|----|---|------------------------------|--|--|
| | | TATT00: ECA 169L DOB: May 29 2023 REG#: | | | |
| BORN 1ST CYCLE? | NO | O C C BLUEPRINT 632B | O C C MODERATOR 825M | | |
| CALVING EASE | 2 | O C C GATE KEEPER 678G | O C C DIXIE ERICA 628W | | |
| UDDER | 4 | O C C DIXIE ERICA 638D | O C C GREAT PLAINS 943G | | |
| FLESHING | 4 | COLE CREEK FULL BORE 730 | O C C DIXIE ERICA 721Y | | |
| | | NCC JUANADA 3042 | COLE CREEK BLACK CEDAR 46P | | |
| | | O C C JUANADA 927F | COLE CREEK S G JUMBOLEEN 76P | | |
| | | | COLE CREEK OSCAR 92R | | |
| | | | JUANADA OF ROLLIN ROCK 0355 | | |

| EPD'S | CED: | BW: | WW: | YW: | MILK: | MCE: |
|-----------|--------|-------------|--------------|---------|-------|------|
| ACT. DATA | BW: 86 | DAM BW: N/A | DAM WT: 1215 | AOD: 11 | | |

- This good cow bull is not registered, but could be done in the American Angus herd book if requested.
- This cow comes out of the great breeding program of the late Ryan Neiman.
- Her dam is a full sister to the great OCC Juanada 709V cow that was the dam of OCC Anchor and other great cattle at Ohlde Cattle Co.

When we are buying livestock, it's all about buying animals from a production system and people that align with our goals and values. As a grassfed beef producer focused on turning grass into meat in a regenerative manner, Edie Creek checked all the boxes for us."

Mitch Good, Good Family Farms, Meaford, Ontario

| LOT | 11 | RED EDIE CREEK GUNTER 7L | | | |
|-----------------|-----|---|-----------------------------|--|--|
| | | TATT00: ECA 7L DOB: April 28 2023 REG#: 2349155 | | | |
| BORN 1ST CYCLE? | YES | RED REDHILL P707 NEBULA 153Z | RED BECKTON NEBULA P P707 | | |
| CALVING EASE | 5 | RED OCC GUNTER 624G | RED BUF CRK REDPRIDE P154 | | |
| UDDER | 4 | RED OCC VANESSA 604C | RED OCC RED GRAZER 610Z MAF | | |
| FLESHING | 4.5 | RED EDIE CREEK EASY RIDE 2G | RED OCC VANESSA 829S | | |
| | | RED EDIE CREEK LUCY 152J | RED OCC EASY RED 868A | | |
| | | RED EDIE CREEK LUCY 24G | EDIE CREEK DUCHESS 109C | | |
| | | | RED CALVO NEBULA 67C | | |
| | | | RED EDIE CREEK LUCY 54C | | |

| EPD'S | CED: 8 | BW: -0.9 | WW: 36 | YW: 64 | MILK: 27 | MCE: 4 |
|-----------|--------|------------|--------------|--------|----------|--------|
| ACT. DATA | BW: 74 | DAM BW: 75 | DAM WT: 1090 | AOD: 3 | | |

- This Heifer bull is showing great masculinity. OCC Gunter 624G has great length of body and nice hip slope.
- His dam is a feminine cow with a very tidy udder. She is double bred to the King 91T bull, and also has a shot of Easy Red and 67C. Well-balanced breeding in this cow, and she's calved every year in the 1st cycle.
- Easy Ride 2G was one of the best Red Angus bulls we've ever produced, we are thankful to have gotten a few daughters before he was sold.



| LOT | 10 | RED EDIE CREEK NEBULA 85L | | | |
|-----------------|-----|--|---------------------------|--|--|
| | | TATT00: ECA 85L DOB: May 12 2023 REG#: 2349418 | | | |
| BORN 1ST CYCLE? | YES | RED BECKTON NEBULA P P707 | RED BECKTON NEBULA M045 | | |
| CALVING EASE | 5 | RED CALVO NEBULA 67C | RED BECKTON LANA M809 EP | | |
| UDDER | 4 | RED CALVO ROSE 8Z | RED BECKTON NEBULA P P707 | | |
| FLESHING | 4.5 | RED OCC EASY RED 868A | RED BECKTON ROSE U272 JJ | | |
| | | RED EDIE CREEK BIEBIRD 3F | RED OCC EASY RED | | |
| | | RED EDIE CREEK BIEBIRD | RED OCC VANESSA 797Y | | |
| | | | RED BANDURA DETOUR 59Y | | |
| | | | CROWFOOT BIEBIRD 3080N | | |

| EPD'S | CED: 13 | BW: -2.5 | WW: 39 | YW: 69 | MILK: 26 | MCE: 9 |
|-----------|---------|------------|---------|--------|----------|--------|
| ACT. DATA | BW: 68 | DAM BW: 71 | DAM WT: | AOD: 6 | | |

- We used this good Heifer bull on our Red Angus heifers last summer.
- His dam is one of our best Red Angus cows. She has a son working for Ole Farms, Athabasca Alberta. She has calved 1st cycle every year.
- Nebula 67C has added some growth & size to our reds, and they are very easy calving. He has been good to work with, but has a larger flight zone than other bulls when he is by himself.





| LOT | 12 | RED EDIE CREEK GUNTHER 71L | | | |
|-----------------|---------|-------------------------------|-------------------------------|---------------|----------|
| | | TATT00: ECA 71L | DOB: May 10 2023 | REG#: 2353414 | |
| BORN 1ST CYCLE? | YES | RED REDHILL P707 NEBULA 153Z | RED BECKTON NEBULA P P707 | | |
| CALVING EASE | 5 | RED OCC GUNTHER 624G | RED BUF CRK REDPRIDE P154 | | |
| | | RED OCC VANESSA 604C | RED OCC RED GRAZER 610Z MAF | | |
| UDDER | 4 | RED EDIE CREEK EASY RIDE 2G | RED OCC VANESSA 829S | | |
| | | RED EDIE CREEK VALENTINE 135J | RED OCC EASY RED 868A | | |
| FLESHING | 5 | RED EDIE CREEK VALENTINE 58G | EDIE CREEK DUCHESS 109C | | |
| | | | RED CALVO NEBULA 67C | | |
| | | | RED EDIE CREEK VALENTINE 112D | | |
| EPD'S | CED: 11 | BW: -2.2 | WW: 30 | YW: 55 | MILK: 28 |
| | | | | | MCE: 6 |
| ACT. DATA | BW: 69 | DAM BW: 65 | DAM WT: 1040 | AOD: 3 | |

- This bull has a 69lb BW and his dam was born at 65lbs, so he should make an excellent Heifer bull.
- Double-bred our OCC Easy Red 868A bull, this fellow is a 7/8 brother to the previous bull. The 2G bull (sire of dam) had some of the best feet on a Red Angus bull anywhere. The 135J dam has calved in the 1st cycle every year so far.
- While talking to Burke Teichert he said one of the best ways to improve fertility is to only keep heifers that were sired by bulls that were born in the first cycle and his dam should have a career of doing that as well.

| LOT | 13 | RED EDIE CREEK NEBULA 79L | | | | |
|-----------------|---------|------------------------------|------------------------------|---------------|----------|--------|
| | | TATT00: ECA 79L | DOB: May 11 2023 | REG#: 2349386 | | |
| BORN 1ST CYCLE? | YES | RED BECKTON NEBULA P P707 | RED BECKTON NEBULA M045 | | | |
| CALVING EASE | 5 | RED CALVO NEBULA 67C | RED BECKTON LANA M809 EP | | | |
| | | RED CALVO ROSE 8Z | RED BECKTON NEBULA P P707 | | | |
| UDDER | 4.5 | RED CALVO NEBULA 67C | RED BECKTON ROSE U272 JJ | | | |
| | | RED EDIE CREEK PRINCESS 78G | RED BECKTON NEBULA P P707 | | | |
| FLESHING | 4 | RED EDIE CREEK PRINCESS 119E | RED CALVO ROSE 8Z | | | |
| | | | RED OCC EASY RED 868A | | | |
| | | | RED EDIE CREEK PRINCESS 120C | | | |
| EPD'S | CED: 15 | BW: -4.4 | WW: 31 | YW: 57 | MILK: 25 | MCE: 9 |
| ACT. DATA | BW: 58 | DAM BW: 78 | DAM WT: 1240 | | AOD: 5 | |

- Heifer bull. This bull is the result of a sire/daughter mating and is showing some line breeding regression. He is quite a bit smaller in size than the others, but his calves will have good growth.
- If you were wondering how easy calving Nebula 67C is, this bull that has him lined up has a 58lb BW.
- Cool pedigree story here--Great-great Granddam 3075N had 11 calves & was a "good enough" daughter of OCC Honesty, foundation black OCC Genetics that have OCC Anchor, EXT, and the great 1019 Dixie Erica cow right there.

| LOT | 14 | EDIE CREEK NEBULA 32L | | | | | |
|-----------------|-----|-------------------------------|------------|------------------|---------------------------|---------------|--------|
| | | TATT00: ECA 32L | | DOB: May 05 2023 | | REG#: 2349211 | |
| BORN 1ST CYCLE? | YES | RED BECKTON NEBULA P P707 | | | RED BECKTON NEBULA M045 | | |
| CALVING EASE | 5 | RED CALVO NEBULA 67C | | | RED BECKTON LANA M809 EP | | |
| UDDER | 4 | RED CALVO ROSE 8Z | | | RED BECKTON NEBULA P P707 | | |
| FLESHING | 5 | EDIE CREEK GREAT ONE 79Y | | | RED BECKTON ROSE U272 JJ | | |
| | | EDIE CREEK LADY ERICA 99E | | | O C C GREAT PLAINS 943G | | |
| | | EDIE CREEK 38U LADY ERICA 17A | | | O C C JUANADA 737L | | |
| | | | | | O C C LEGACY 839L | | |
| | | | | | EDIE CREEK LADY ERICA 38U | | |
| EPD'S | | CED: 14 | BW: -2.8 | WW: 35 | YW: 62 | MILK: 23 | MCE: 9 |
| ACT. DATA | | BW: 69 | DAM BW: 70 | DAM WT: 1260 | | AOD: 7 | |

- Heifer bull. We have started to breed some of our good black cows to red bulls.
- Lady Erica 99E is an excellent Great one 79Y daughter, she is the kind of cow that is maintenance free and knows how to work for a living. She has calved in the 1st cycle 5 out of 6 times. The Lady Erica cow family excelled in fertility and function, with easy calving and good scrotal circumference in the sons.
- Black/Red Carrier bulls will sire 50/50% black vs red calves when mated to a group of all-red cows. When mated to homozygous black cows, the calves will be all black but 25% of them will carry the (recessive) red gene.

BULL RATINGS EXPLAINED

CALVING EASE: Based on the bull's birthweight, his parents' birthweight, and his own EPD's. Also based on the assumption that the bull will be breeding small-framed Angus/British cattle--if the bull will be breeding larger-framed Continental cattle, a three-star (***) bull could work on heifers. These are simply guidelines to help your decision making. You are ultimately responsible for the matings of your own cattle.

UDDER RATING: Based on the combination of what the sire and dam bring to the equation. The quality of the dam's udder structure- teat shape and size, and what the sire's genetic potential brings. Rated between "1" - "5", a score of "3" would be an average, functional udder, while a score of "5" would be a perfectly level udder with small, shapely teats.

CALVING EASE RATING: Here's what the numbers tell you:

- 1 - Suitable for breeding cows only - 100 lb+ Birth weights possible
- 2 - Suitable for breeding smaller cows-90 lb+ Birth weights possible
- 3 - Suitable for breeding cows and larger-framed, mature heifers - 85 lb BW's
- 4 - Suitable for breeding heifers & cows too
- 5 - HEIFER BULL, easy deliveries with vigorous calves at birth!

BORN 1ST CYCLE: This indicates if a bull was born in the first 21 days of the calving season. This includes bulls that were born early from short gestation. 81% of all the bulls on offer were born in the first cycle of our calving season.

AOD: Age of Dam. Actual age of the bull's dam when she raised him.





Edie
Creek
Betsy
106C -
Dam of
Lot 15



| LOT 15 | | EDIE CREEK NORTH STAR 155L | | | | |
|-----------------|--------|---|--------------|---|----------|--------|
| | | TATTOO: ECA 155L DOB: May 22 2023 REG#: 2355073 | | | | |
| BORN 1ST CYCLE? | YES | EDIE CREEK GREAT ONE 77F EDIE CREEK NORTH STAR 64H O C C DIXIE ERICA 606S | | EDIE CREEK GREAT ONE 79Y CH GEORGINA 626 O C C GREAT PLAINS 943G O C C DIXIE ERICA 612H O C C LEGACY 839L O C C KAREN 759N O C C LEGACY 839L AWH BETSY 12R | | |
| CALVING EASE | 3.5 | EDIE CREEK ZORRO 24Z EDIE CREEK BETSY 106C | | | | |
| UDDER | 4.5 | EDIE CREEK 839L BETSY 3X | | | | |
| FLESHING | 4.5 | | | | | |
| EPD'S | CED: 8 | BW: 0 | WW: 40 | YW: 73 | MILK: 20 | MCE: 4 |
| ACT. DATA | BW: 82 | DAM BW: 75 | DAM WT: 1470 | AOD: 9 | | |

- Here is the first of our Edie Creek North Star 64H sons to sell! He has a little more frame size than most and brings big rib capacity. He is an absolute stud of a bull.
- His dam is an excellent cow who sheds early every spring, (a sign of hormonal balance) & has calved first cycle every year. She is double bred to OCC Legacy 839L
- We used this bull to breed cows last summer. We have seen really good things from this cow family. One of our favourite Titan daughters is a maternal sister to this bull.

| LOT 16 | | EDIE CREEK NORTH STAR 49L | | | | |
|-----------------|--------|---|--------------|--|----------|--------|
| | | TATTOO: ECA 49L DOB: May 06 2023 REG#: 2355083 | | | | |
| BORN 1ST CYCLE? | YES | EDIE CREEK GREAT ONE 77F EDIE CREEK NORTH STAR 64H O C C DIXIE ERICA 606S | | EDIE CREEK GREAT ONE 79Y CH GEORGINA 626 O C C GREAT PLAINS 943G O C C DIXIE ERICA 612H O C C BIG TIME 746Z O C C DIXIE ERICA 693N MH TITAN 752 EDIE CREEK JUANADA 737L 62Y | | |
| CALVING EASE | 4 | EDIE CREEK BIG TIME 848C EDIE CREEK JUANADA 50H | | | | |
| UDDER | 5 | EDIE CREEK JUANDA 62E | | | | |
| FLESHING | 4 | | | | | |
| EPD'S | CED: 7 | BW: 0.3 | WW: 40 | YW: 66 | MILK: 21 | MCE: 5 |
| ACT. DATA | BW: 78 | DAM BW: 76 | DAM WT: 1205 | AOD: 4 | | |

- Heifer bull. This bull is bred similarly to our \$14,500 high selling bull from last year. Lot 16 traces back to OCC Great Plains 4 times and also has some other neat linebreeding going on if you dig back into his pedigree.
- This bull will fix udders, and refine a set of cows. He is an athletic breeding machine that is built to travel! We are really excited to offer our customers these North Star sons. Their pedigrees are packed with proven, maternal genetics
- Juanada 50H is a very nice cow that's backed by a good cow family for us and she has calved in the 1st cycle every year so far. Her Granddam 62Y was the product of an embryo imported from OCC, and she was the 2nd OCC Great Plains daughter that we have owned. (606S was the first.) It took a while for us to learn what a "good enough" cow looked like, and 62Y was at the beginning of our learning curve...

| LOT 17 | | EDIE CREEK NORTH STAR 50L | | | | |
|-----------------|---------|---|--------------|--|----------|--------|
| | | TATTOO: ECA 50L DOB: May 06 2023 REG#: 2355088 | | | | |
| BORN 1ST CYCLE? | YES | EDIE CREEK GREAT ONE 77F EDIE CREEK NORTH STAR 64H O C C DIXIE ERICA 606S | | EDIE CREEK GREAT ONE 79Y CH GEORGINA 626 O C C GREAT PLAINS 943G O C C DIXIE ERICA 612H COLE CREEK CEDAR RIDGE IV MH FRANCES 720 MH TITAN 752 MH FRANCES 612I | | |
| CALVING EASE | 4 | MH MH FRANCES 622 | | | | |
| UDDER | 5 | MH FRANCES 186 | | | | |
| FLESHING | 3.5 | | | | | |
| EPD'S | CED: 12 | BW: -1.3 | WW: 34 | YW: 56 | MILK: 19 | MCE: 8 |
| ACT. DATA | BW: 80 | DAM BW: 71 | DAM WT: 1320 | AOD: 8 | | |

- Heifer bull. Here is another bull that is line bred with 4 shots to OCC Great Plains 943G. This type of genetics are built for a long career. The cows won't be your favourite to look at as bred heifers or young cows, but they will out last all the ones that stood out as bred heifers.
- Many programs claim their bulls can do all things. Ours can not. They are bred for a specific purpose--maternal excellence. Traits like high growth and big frame size are antagonistic to longevity and fertility in your cow herd. Despite not being selected solely for performance, these cattle wean respectable calves and as we've done for over 15 years, can produce tender, gourmet grass-finished beef on pasture.
- The dam of this bull is a maternal sister to the dam of lot 2. The MH Frances 186 cow was a beautiful Titan daughter. Your cows live on your operation 365 days of the year, buy a bull like this to match your cattle to the environmental resources you have with minimal supplementation. The 622 cow has calved 7 out of 8 times in the 1st cycle.



HOWREY ANGUS & EDIE CREEK ANGUS HAVE JOINED FORCES!



The History of Howrey Angus and Edie Creek Angus has been intertwined since 2014 when Stefan & Jonathan Bouw first travelled down to Monte Howrey's Vale, SD ranch to meet him in a last-minute rendezvous that almost didn't happen.

Back in 2014, Stefan and Jonathan had already been in pursuit of the best forage-adapted maternal genetics possible for nearly a decade, and had established the Edie Creek Angus cowherd back in Manitoba, which was improving as quickly as the school of hard knocks was handing out lessons.

Throughout the years, we would catch wind of Howrey Angus bloodlines, always having heard good things about them. When we fortuitously met Monte Howrey one late October afternoon on his ranch, we connected and understood that Monte was a breeder who was purely focused on making the best cow possible, and in a replicable manner—for the good of the commercial cow industry. Monte spoke, (among other things,) of a mature herdsire named MH Titan 752, and our interest was piqued!

Stefan tirelessly persuaded Monte that since Titan was already 7, and then 8 years old, he surely could let go of him, and that we could further prove his worth in a different climate. Eventually the export paperwork was done, and Titan immigrated to Manitoba, Canada, where he bred cows until he was 13 years old.

Titan made a very useful cross on our heavily (Traveler) 6807-influenced cowherd, and brought all of the utility of the Emulation line through his sire, OCC Great Plains 943G, along with the stabilized maternal type of his Dixie Erica of CH 1019 granddam and the MH Melisa 357 dam.

In the winter of 2021/2022 Monte approached us with the offer to sell his cow herd to us. We were grateful for the opportunity, so with great excitement we expanded our breeding program by purchasing the Howrey Angus cowherd in Sterling, North Dakota. Monte Howrey has been a great mentor to us and his cattle have adapted & excelled in our low input, maternal-focused Edie Creek Angus herd in Manitoba, Canada.

Our Howrey Angus cow herd is located in Sterling, North Dakota on the Rath Family Ranch. Kip Rath and his family have a commercial cow herd, and our cows live year-round on their ranch. The Rath family are excellent caretakers of the cattle and great stewards of the land, and we are very grateful to be working with them!

Our breeding philosophies have been shaped by Monte and other legendary Angus breeders of grass-type cattle, and we are committed to stay true to the direction Monte has focused on. Our Edie Creek Angus cowherd in Canada has been shaped by Howrey Angus genetics and shares the same goals and selection criteria. These cattle work well in any environment (all across Canada, and from Montana shortgrass country down to Fescue country in the Eastern US), so we see no reason to change their function or phenotype!



| LOT | | 18 | | EDIE CREEK NORTH STAR 216L | | | | | | | | | |
|-----------------|--|--------|--|---|--|-------------------|---|---------------|--|----------|--|--------|--|
| | | | | TATTOO: ECA 216L | | DOB: June 17 2023 | | REG#: 2359973 | | | | | |
| BORN 1ST CYCLE? | | NO | | EDIE CREEK GREAT ONE 77F EDIE CREEK NORTH STAR 64H O C C DIXIE ERICA 606S | | | EDIE CREEK GREAT ONE 79Y CH GEORGINA 626 O C C GREAT PLAINS 943G O C C DIXIE ERICA 612H O C C ECHELON 857E O C C DIXIE ERICA 960E O C C MOONSHINE 740M CROWFOOT FORKS 723K | | | | | | |
| CALVING EASE | | 2 | | O C C LEGACY 839L EDIE CREEK PRIDE 64B CROWFOOT PRIDE 5893R | | | | | | | | | |
| UDDER | | 5 | | | | | | | | | | | |
| FLESHING | | 5 | | | | | | | | | | | |
| EPD'S | | CED: 8 | | BW: 0.1 | | WW: 37 | | YW: 65 | | MILK: 22 | | MCE: 4 | |
| ACT. DATA | | BW: 85 | | DAM BW: 69 | | | DAM WT: 1280 | | | AOD: 10 | | | |

- Lot 18 is a friendly bull that will have some friends on sale day. He is packing extra fleshing ability.
- Granddam Crowfoot Pride 5839R holds the record here for calves weaned. She raised 20 calves naturally. Incredible. You will also find the 606S cow in the pedigree - She raised her last calf as a 17yr old.
- This young bull has more longevity in his pedigree than most! Even though he was born later, he is a high quality breeding piece that deserves to be in the sale. His dam Pride 64B has the perfect Bonsma wedge shape, and has calved in the 1st cycle for 7 out of 9 times so far.



| LOT | 19 | | EDIE CREEK 9L | | | |
|-----------------|--------|------------|-------------------------------------|-----|--|-------|
| | | | TATT00: ECA 9L | | DOB: April 30 2023 | REG#: |
| BORN 1ST CYCLE? | YES | | | | | |
| CALVING EASE | 2 | | | | | |
| UDDER | 4 | | MH TITAN 752 EDIE CREEK MINA 54G | | O C C GREAT PLAINS 943G MH MELISA 357 | |
| FLESHING | 3 | | MH MINA 639 | | SHOSHONE FRANZ 419 MH MINA 392 | |
| EPD'S | CED: | BW: | WW: | YW: | MILK: | MCE: |
| ACT. DATA | BW: 73 | DAM BW: 81 | DAM WT: 1330 | | AOD: 5 | |

- We hope to get DNA back before sale day that will determine his sire.
- His dam is a larger framed Titan daughter that goes back to solid Shoshone pedigree.
- This bull is one of the larger framed bulls in the sale.

| LOT | 20 | EDIE CREEK EQUINOX 78L | | | | | |
|-----------------|-----|---|------------|------------------|--------------|--|--------|
| | | TATT00: ECA 78L | | DOB: May 11 2023 | | REG#: 2355131 | |
| BORN 1ST CYCLE? | YES | LOYNING EQUINOX 7 LOYNING 7 EQUINOX 0009 LOYNING ESTER 7008 | | | | HORSE BUTTE 6141 OF 3141 JAD ESTER 3750 | |
| CALVING EASE | 3 | | | | | PAPA FORTE 1921 HBR SHOSHONE ESTER 7133 | |
| UDDER | 4 | EDIE CREEK GREAT ONE 77F EDIE CREEK KAREN 75J EDIE CREEK KAREN 15B | | | | EDIE CREEK GREAT ONE 79Y CH GEORGINA 626 | |
| FLESHING | 4 | | | | | EDIE CREEK GREAT ONE 79Y EDIE CREEK KAREN 25Z | |
| EPD'S | | CED: 5 | BW: 0.9 | WW: 52 | YW: 83 | MILK: 26 | MCE: 4 |
| ACT. DATA | | BW: 74 | DAM BW: 86 | | DAM WT: 1070 | | AOD: 3 |

- We are really liking our Equinox daughters. They have been intelligent mothers and have raised good calves.
- This bull is packed with muscle and has a bit more size to him. His dam is the product of a half sib mating. Great One 79Y has been one of those bulls that consistently improved the cows he was bred to. The 75J cow is 2-for-2 in 1st cycle calvings!
- One of our top selling bulls last year was a \$10,000 Equinox son. This 78L bull has been an eye-catching bull since he was very young. Hormonally balanced herd bull prospect.

| LOT | 21 | | EDIE CREEK EQUINOX 180L | | | | | |
|-----------------|-----|--|-------------------------|--------|---|----------|---------------|--|
| | | | TATT00: ECA 180L | | DOB: June 01 2023 | | REG#: 2356526 | |
| BORN 1ST CYCLE? | NO | LOYNING EQUINOX 7 LOYNING 7 EQUINOX 0009 | | | HORSE BUTTE 6141 OF 3141 JAD ESTER 3750 | | | |
| CALVING EASE | 2.5 | LOYNING ESTER 7008 | | | PAPA FORTE 1921 HBR SHOSHONE ESTER 7133 | | | |
| UDDER | 5 | EDIE CREEK GREAT ONE 77F EDIE CREEK 38J FLORA 55J | | | EDIE CREEK GREAT ONE 79Y CH GEORGINA 626 | | | |
| FLESHING | 3 | EDIE CREEK 38J FLORA 75Z | | | O C C WORTHY MAN 967W LENLOOK FLORA 26J | | | |
| EPD'S | | CED: 0 | BW: 2.2 | WW: 54 | YW: 87 | MILK: 26 | MCE: 2 | |
| ACT. DATA | | BW: 82 | DAM BW: 86 | | DAM WT: 1385 | | AOD: 3 | |

- This bull will sire some very pretty and refined females with a little more frame size potential.
- His dam is a 3/4 sister to the Great Flora 1B cow that has the lot 7 bull in the sale.
- Cows need to look like cows. Extension in their neck, fine boned, nice long tail switch. Fertility improvements in your herd will show up when the cows look the part.

| LOT | 22 | | EDIE CREEK EQUINOX 148L | | | | | |
|-----------------|-----|--|-------------------------|--------|--|----------|---------------|--|
| | | | TATT00: ECA 148L | | DOB: May 20 2023 | | REG#: 2349681 | |
| BORN 1ST CYCLE? | YES | LOYNING EQUINOX 7 LOYNING 7 EQUINOX 0009 LOYNING ESTER 7008 | | | HORSE BUTTE 6141 OF 3141 JAD ESTER 3750 PAPA FORTE 1921 HBR SHOSHONE ESTER 7133 | | | |
| CALVING EASE | 4 | | | | COLE CREEK BLACK CEDAR 46P | | | |
| UDDER | 3.5 | COLE CREEK FULL BORE 730 EDIE CREEK DIXIE ERICA 16J EDIE CREEK DIXIE ERICA 29F | | | COLE CREEK S G JUMBOLEEN 76P MH TITAN 752 EDIE CREEK DIXIE ERICA 7C | | | |
| FLESHING | 4 | | | | | | | |
| EPD'S | | CED: 8 | BW: 0.4 | WW: 41 | YW: 71 | MILK: 24 | MCE: 5 | |
| ACT. DATA | | BW: 75 | DAM BW: 70 | | DAM WT: 1070 | | AOD: 3 | |

- Heifer bull. This is the last of the Equinox sons in the sale, and might be one of the last ones we ever offer, as we have a limited amount of semen collected before he suffered an injury that ended his career.
- Dam has calved in the 1st cycle every year so far. Young cows have a steep challenge raising calves and growing out their own bodies in a low-input system. 16J is pulling her weight so far!
- The bottom side of this pedigree has some interesting components with Cole Creek Full Bore, MH Titan, OCC Hunter, and the great OCC Dixie Erica 606S cow.

"The Edie Creek bulls have done well for us. They've adapted easily to our northern environment and are fertile, functional, and really easy doing. With the goal of building a maternal, low-maintenance, fertile cow herd that is moderate in size and spends most of the year grazing with a calf at side, we feel the daughters out of these types of bulls look really promising and our replacement heifer pen is greatly improving year by year." - Luke Stahl, Doe River Colony Bonanza, AB.



DID YOU KNOW...

- Reproduction is the most important factor affecting profitability.
- Reproduction is 5X more important than growth rate, and 10X more important than carcass quality when it comes to profit.
- Every missed breeding cycle represents a 42 lb loss in weaning weight.
- Body Condition has the greatest impact on reproduction. ("Howrey Angus bulls will sire Easier Fleshing Cows that can hold Body Condition.").
- Thin cows are only half as productive as those in optimum condition.



| LOT | 23 | EDIE CREEK ABESLY 226L | |
|-----------------|-----|--------------------------|---------------------------|
| | | TATT00: ECA 226L | DOB: June 22, 2023 |
| | | REG#: | |
| BORN 1ST CYCLE? | NO | WLSF ABESLY | WLSF ABRAHAM |
| CALVING EASE | 2 | DOUBLE BAR D ABESLY 308B | JWLSF PEGSLY |
| UDDER | 4 | DOUBLE BAR D LUCY 19U | FGAF MASAIL 307S |
| FLESHING | 4.5 | EDIE CREEK GREAT ONE 79Y | DOUBLE BAR D LUSIOUS 184S |
| | | EDIE CREEK FRANCES 113F | OCC GREAT PLAINS 943G |
| | | MH FRANCES 621D | OCC JUANADA 737L |
| | | | CAR CHINNOCK 786 |
| | | | MH FRANCES 327 |

| EPD'S | CED: | BW: | WW: | YW: | MILK: | MCE: |
|-----------|--------|------------|--------------|--------|-------|------|
| ACT. DATA | BW: 85 | DAM BW: 70 | DAM WT: 1300 | AOD: 6 | | |

- First of the Hybrid bulls to sell. He's loaded with muscle and will certainly add some pounds to a calf crop! Sire Abesly is now 11 years old and fit to keep on working. He is sound, round and low to the ground. He also likes to be scratched, although the hybrid sons are less docile than the old man himself.
- His dam is a good uddered cow that has calved first cycle every year except once.
- Customers that have bought these F1 Bulls have been very pleased with them. They are athletic, resilient hybrid cattle that can add a bit of heterosis to a black calf crop without de-stabilizing the maternal core in the retained daughters.



| LOT | 24 | EDIE CREEK ABESLY 198L | |
|-----------------|-----|--------------------------|---------------------------|
| | | TATT00: ECA 198L | DOB: June 9 2023 |
| | | REG#: | |
| BORN 1ST CYCLE? | NO | WLSF ABESLY | WLSF ABRAHAM |
| CALVING EASE | 2 | DOUBLE BAR D ABESLY 308B | JWLSF PEGSLY |
| UDDER | 4 | DOUBLE BAR D LUCY 19U | FGAF MASAIL 307S |
| FLESHING | 4.5 | MH TYSON 769 | DOUBLE BAR D LUSIOUS 184S |
| | | MH FRANCES 18 | DDA EMBLAZON 27C |
| | | MH FRANCES 747 | MH MINA 836 |
| | | | OCC HOMER 650H |
| | | | MH FRANCES 55 |

| EPD'S | CED: | BW: | WW: | YW: | MILK: | MCE: |
|-----------|--------|---------|--------------|---------|-------|------|
| ACT. DATA | BW: 92 | DAM BW: | DAM WT: 1155 | AOD: 13 | | |

- This bull is a real tough one to let go of. His sire is still breeding at age 11 this year, and 198L was the Frances 18 cow's last calf at age 12. Tons of longevity and function.
- This bull will breed well and leave excellent daughters. We can pretty much say this about all the bulls, but this guy's mother was definitely a favourite cow.
- The Frances 18 cow has top selling bulls working for Kody Aesoph in S.D., and Martin DeVos in Fork River, MB.

| LOT | 25 | EDIE CREEK ABESLY 213L | |
|-----------------|----|-----------------------------|---------------------------|
| | | TATT00: ECA 213L | DOB: June 1 2023 |
| | | REG#: | |
| BORN 1ST CYCLE? | NO | WLSF ABESLY | WLSF ABRAHAM |
| CALVING EASE | 2 | DOUBLE BAR D ABESLY 308B | JWLSF PEGSLY |
| UDDER | 4 | DOUBLE BAR D LUCY 19U | FGAF MASAIL 307S |
| FLESHING | 4 | OCC WORTHY MAN 967W | DOUBLE BAR D LUSIOUS 184S |
| | | EDIE CREEK WM LUCY 116D | OCC SENTINEL 714S |
| | | EDIE CREEK LEGACY LUCY 154U | OCC DIXIE ERICA 859T |
| | | | HILLFIRE LEGACY 518R |
| | | | ROSEBANK LUCY 87K |

| EPD'S | CED: | BW: | WW: | YW: | MILK: | MCE: |
|-----------|------|------------|--------------|--------|-------|------|
| ACT. DATA | BW: | DAM BW: 99 | DAM WT: 1200 | AOD: 8 | | |

- Here's the last Hybrid bull in the sale. His dam has been very productive for us, with a top selling son in a past sale.
- The sire of these Fleck/Angus bulls is named Abesly, affectionately called "Abe". His daughters have tidy udders and great fleshing and rib capacity.
- Its difficult to find bulls like these that aren't over-fed. This is the kind of bull that, barring injury, can work for you for a decade like their sire! Dam 116D has calved 1st cycle every year but one.

At Edie Creek Angus, we are focused on
BREEDING MATERNAL GENETICS
 that are proven to fit a low-input environment and
 management practices based on **MAXIMIZING**
PROFIT PER ACRE OF GRASS.

REGISTER TO BID

STEP-BY-STEP GUIDE

Preferred browser: Google Chrome

- #### 1 CREATE YOUR ACCOUNT

Click "Create Account" in the top right hand corner.
- #### 2 FILL IN YOUR INFORMATION

Fill in your First Name, Last Name, Username, Password and Email address to complete the form, then hit "create account" at the bottom of the page. Alternatively sign in using your Facebook or Google account.
- #### 3 APPROVE YOUR EMAIL

Check your email for an email from "Team Auction Sales" to approve your account. Make sure to check your junk folder if you don't see it in your inbox.
- #### 4 CONFIRM YOUR EMAIL ADDRESS

Click on "confirm your email address" to activate your account.
- #### 5 GET APPROVED TO BID

Go to the auction you want to register for and click "Get approved to bid".
- #### 6 FILL IN YOUR BILLING INFORMATION

Fill out the billing information and click "confirm your information" at the bottom. You will then be registered for all upcoming auctions. You can edit your billing information any time by clicking on "bidder account" in the menu bar.

NEED ASSISTANCE?
 PLEASE CALL OUR DEDICATED TECH SUPPORT LINE AT 1-866-313-0123 IF YOU NEED ASSISTANCE AT ANY TIME CREATING YOUR ACCOUNT OR USING OUR NEW WEBSITE.



| LOT | 26 | | EDIE CREEK GATE KEEPER 116L | | | | | |
|-----------------|-----|---|-----------------------------|-------------------------|------------------|----------|---------------|--|
| | | | TATT00: ECA 116L | | DOB: May 15 2023 | | REG#: 2402028 | |
| BORN 1ST CYCLE? | YES | O C C BLUEPRINT 632B O C C GATE KEEPER 678G | | O C C MODERATOR 825M | | | | |
| CALVING EASE | 3 | O C C DIXIE ERICA 638D | | O C C DIXIE ERICA 628W | | | | |
| UDDER | 5 | MH TITAN 752 EDIE CREEK JUANADA 137G | | O C C GREAT PLAINS 943G | | | | |
| FLESHING | 5 | EDIE CREEK JUANADA 737L 62Y | | O C C DIXIE ERICA 721Y | | | | |
| | | | | O C C GREAT PLAINS 943G | | | | |
| | | | | MH MELISA 357 | | | | |
| | | | | O C C GREAT PLAINS 943G | | | | |
| | | | | O C C JUANADA 737L | | | | |
| EPD'S | | CED: 11 | BW: -0.2 | WW: 32 | YW: 56 | MILK: 22 | MCE: 6 | |
| ACT. DATA | | BW: 80 | DAM BW: 67 | | DAM WT: 1145 | | AOD: 5 | |

- We are back into the good OCC Gate Keeper 678G sons. This bull has always shown extra muscling and a curious character.
- His maternal brother was last years high seller going for \$14,500 to Townview Farms at Blumenort, MB. 137G has calved 1st cycle 3 out of 4 years.
- There is some neat line breeding to OCC Great Plains 943G in his dams pedigree, as well as in Gate Keeper's pedigree. Take a good look at this bull, he's good.

| LOT | 28 | EDIE CREEK GATE KEEPER 100L | | | | | |
|-----------------|-----|---|--|------------------|--|---------------|--|
| | | TATT00: ECA 100L | | DOB: May 13 2023 | | REG#: 2349462 | |
| BORN 1ST CYCLE? | YES | O C C BLUEPRINT 632B O C C GATE KEEPER 678G | | | O C C MODERATOR 825M O C C DIXIE ERICA 628W | | |
| CALVING EASE | 4.5 | O C C DIXIE ERICA 638D | | | O C C GREAT PLAINS 943G O C C DIXIE ERICA 721Y O C C GREAT PLAINS 943G | | |
| UDDER | 5 | MH TITAN 752 EDIE CREEK ERICA 21G | | | MH MELISA 357 EDIE CREEK EMBLAZON 89Y | | |
| FLESHING | 4 | EDIE CREEK ERICA 72D | | | CROWFOOT ERICA 1652L | | |
| EPD'S | | CED: 10 | | BW: 0 | | WW: 26 | |
| | | YW: 54 | | MILK: 19 | | MCE: 6 | |
| ACT. DATA | | BW: 78 | | DAM BW: 71 | | DAM WT: 1225 | |
| | | | | | | AOD: 5 | |

- Nice Heifer bull. This kind of bull will be able to breed heifers for you for a long time. You won't have to worry about him being too heavy for a long while.
- This bull is out of one of Jaxon's cows. She's a Titan daughter with an extremely tidy udder. She goes back to the great Erica 1652L cow. She has calved 1st cycle every year but once.
- Really neat pedigree. Titan, Emblazon, Great Plains... reads like a near-perfect balanced pedigree in the area of maternal angus excellence.



Edie Creek Dixie Erica 71B • Dam of Lot 27

| LOT | 27 | EDIE CREEK GATE KEEPER 147L | | | | | |
|-----------------|--------|--|----------|------------------|----------------------------|---------------|---------|
| | | TATT00: ECA 147L | | DOB: May 20 2023 | | REG#: 2349680 | |
| BORN 1ST CYCLE? | YES | O C C BLUEPRINT 632B O C C GATE KEEPER 678G | | | O C C MODERATOR 825M | | |
| CALVING EASE | 4.5 | O C C DIXIE ERICA 638D | | | O C C DIXIE ERICA 628W | | |
| UDDER | 5 | EDIE CREEK 839L 298 LEGACY 5Y EDIE CREEK DIXIE ERICA 71B | | | O C C GREAT PLAINS 943G | | |
| FLESHING | 5 | CROWFOOT DIXIE ERICA 4895P | | | O C C DIXIE ERICA 721Y | | |
| | | | | | O C C LEGACY 839L | | |
| | | | | | CROWFOOT ROSE LEE 5823R | | |
| | | | | | CANE RIDGE CHALLENGER 2334 | | |
| | | | | | CROWFOOT DIXIE ERICA 2629M | | |
| EPD'S | | CED: 14 | BW: -1.3 | WW: 29 | YW: 57 | MILK: 23 | MCE: 12 |
| ACT. DATA | BW: 68 | DAM BW: 56 | | DAM WT: 1245 | | AOD: 10 | |

- Heifer bull. Here's a nice low birth weight Gate Keeper son. Phenomenal genetic package with OCC Emblazon, Legacy, Moonshine, and now Gate Keeper who brings OCC Great Plains & the top-notch Dixie Erica 628W cow & more layers of the foundation 1019 cow. Maternal excellence locked in.
- His dam has been an ideal cow for us. She is easy to look at and very productive: an Elite dam with the CAA & had an excellent Equinox son sell last year for \$10,000 to Black Rose Ranch. Her daughters are great too. She has calved first cycle every year.
- We have considered keeping this bull for our selves, but still have his sire and another Gate Keeper son that we kept back last year out of a Titan daughter. We have retained a maternal brother in past years.

| LOT | 29 | EDIE CREEK GATE KEEPER 102L | | | | |
|-----------------|--------|---|--------------|--------|----------|--------|
| | | TATT00: ECA 102L DOB: May 13 2023 REG#: 2349464 | | | | |
| BORN 1ST CYCLE? | YES | O C C BLUEPRINT 632B O C C GATE KEEPER 678G O C C DIXIE ERICA 638D | | | | |
| CALVING EASE | 3 | | | | | |
| UDDER | 4.5 | O C C WORTHY MAN 967W EDIE CREEK REV ROSE 68E | | | | |
| FLESHING | 4.5 | XO CROWFOOT REV ROSE 8816U CROWFOOT CH REV ROSE 1627L | | | | |
| EPD'S | CED: 5 | BW: 1.5 | WW: 29 | YW: 57 | MILK: 17 | MCE: 2 |
| ACT. DATA | BW: 83 | DAM BW: 80 | DAM WT: 1195 | AOD: 7 | | |

- We bought the maternal grand dam of this bull from the Crowfoot dispersal back in 2013 for \$9,000. She was an embryo donor cow for us, and the 68E cow is beginning to show the maternal prowess that the 8816U cow was selected for...
- This bull has a little more frame size than some of the Gate Keeper sons and has tidy feet. He is an impressive individual that will find lots of friends on sale day and beyond...
- The dam of this bull has calved first cycle every year.

| LOT | 30 | RED EDIE CREEK EASY 19L | | | | |
|-----------------|--------|--|--------------|--------|----------|--------|
| | | TATT00: ECA 19L DOB: May 03 2023 REG#: 2402027 | | | | |
| BORN 1ST CYCLE? | YES | RED OCC EASY RED 868A RED EDIE CREEK 19F RED EDIE CREEK LADY 45B | | | | |
| CALVING EASE | 3 | | | | | |
| UDDER | 3.5 | RED CALVO RED GRAZER 8E RED EDIE CREEK BIEBIRD 103H RED EDIE CREEK BIEBIRD | | | | |
| FLESHING | 4 | RED OCC EASY RED RED OCC VANESSA 797Y RED CROWFOOT MOONSHINE 8081U RED CROWFOOT LADY 6503S RED OCC RED GRAZER 610Z MAF RED BUF CRK AMY W086 RED BANDURA DETOUR 59Y CROWFOOT BIEBIRD 3080N | | | | |
| EPD'S | CED: 4 | BW: 0.8 | WW: 42 | YW: 75 | MILK: 23 | MCE: 4 |
| ACT. DATA | BW: 78 | DAM BW: 86 | DAM WT: 1210 | AOD: 4 | | |

- Nice long bull that's sired by the great Edie Creek 19F bull that we share ownership with Gemstone Cattle Co. His paternal granddam, Red Crowfoot Lady 6503S worked her until she was 15 years old, and had perfect feed and a great udder.
- ECA 19F has sold some good high-valued bulls at the Gemstone sale in Alberta.
- 103H has calved in the first cycle every year. This bull would rather not be alone.

| LOT | 31 | RED EDIE CREEK EASY 73L | | | | |
|-----------------|--------|---|--------------|--------|----------|--------|
| | | TATT00: ECA 73L DOB: May 10 2023 REG#: 2349375 | | | | |
| BORN 1ST CYCLE? | YES | RED OCC EASY RED 868A RED EDIE CREEK 19F RED EDIE CREEK LADY 45B | | | | |
| CALVING EASE | 2 | RED OCC EASY RED 868A RED EDIE CREEK ROSE 8E RED EDIE CREEK ROSE 121C | | | | |
| UDDER | 3 | RED OCC EASY RED RED OCC VANESSA 797Y RED CROWFOOT MOONSHINE 8081U RED CROWFOOT LADY 6503S RED OCC EASY RED RED OCC VANESSA 797Y RED EDIE CRK NORSEMAN KING 91T RED RIDGE SIDE ROSE 2S | | | | |
| FLESHING | 4.5 | | | | | |
| EPD'S | CED: 4 | BW: 0.8 | WW: 31 | YW: 63 | MILK: 26 | MCE: 0 |
| ACT. DATA | BW: 89 | DAM BW: 67 | DAM WT: 1260 | AOD: 7 | | |

- OCC Easy Red was a game changer for us in our Red Angus herd. He was a big time foot-improver. That seems to be something that is often missing when picking out Reds.
- The dam of this bull is very fertile. She has calved first cycle every year and has a daughter had twins as a heifer and has calved first cycle ever year since.
- Having the King 91T bull in the background of the pedigree brings the OCC Hunter-sired Enchantress 4091P cow who was one of the most beautiful cows to graze our grass.

| LOT | 32 | RED EDIE CREEK EASY 24L | | | | |
|-----------------|---------|---|--------------|--------|----------|--------|
| | | TATT00: ECA 24L DOB: May 03 2023 REG#: 2349182 | | | | |
| BORN 1ST CYCLE? | YES | RED OCC EASY RED 868A RED EDIE CREEK 19F RED EDIE CREEK LADY 45B | | | | |
| CALVING EASE | 5 | | | | | |
| UDDER | 4 | RED CALVO RED GRAZER 8E RED EDIE CREEK PRINCESS 51H RED EDIE CREEK PRINCESS 119E | | | | |
| FLESHING | 4 | RED OCC EASY RED RED OCC VANESSA 797Y RED CROWFOOT MOONSHINE 8081U RED CROWFOOT LADY 6503S RED OCC RED GRAZER 610Z MAF RED BUF CRK AMY W086 RED OCC EASY RED 868A RED EDIE CREEK PRINCESS 120C | | | | |
| EPD'S | CED: 11 | BW: -2.1 | WW: 29 | YW: 56 | MILK: 25 | MCE: 4 |
| ACT. DATA | BW: 69 | DAM BW: 84 | DAM WT: 1100 | AOD: 4 | | |

- Here is a smaller Heifer bull. He is double bred Easy Red. He should be able to breed heifers for many years.
- His dam goes back to the Princess cow family. We have really started to value these cows. The foundation 3075N cow written about in lot 13's write-up was a better cow than we knew at the time, and the 119E cow is a beautiful cow now!
- Dam has calved in the 1st cycle 2 out of 3 years.

| LOT | 33 | EDIE CREEK EASY 109L | | | | |
|-----------------|--------|--|--------------|--------|----------|--------|
| | | TATT00: ECA 109L DOB: May 14 2023 REG#: 2349471 | | | | |
| BORN 1ST CYCLE? | YES | RED OCC EASY RED 868A RED EDIE CREEK 19F RED EDIE CREEK LADY 45B | | | | |
| CALVING EASE | 4 | | | | | |
| UDDER | 4 | RED OCC EASY RED 868A EDIE CREEK SYRINGA 135E EDIE CREEK 518R SYRINGA 33X | | | | |
| FLESHING | 5 | RED OCC EASY RED RED OCC VANESSA 797Y RED CROWFOOT MOONSHINE 8081U RED CROWFOOT LADY 6503S RED OCC EASY RED RED OCC VANESSA 797Y HILLFIRE LEGACY 518R RED EDIE CREEK SYRINGA 324S | | | | |
| EPD'S | CED: 7 | BW: -0.4 | WW: 30 | YW: 62 | MILK: 26 | MCE: 1 |
| ACT. DATA | BW: 81 | DAM BW: 74 | DAM WT: 1395 | AOD: 7 | | |

- Extremely good Black/Red carrier bull. He is long & strong topped, loaded with beef, & should be able to settle a big group of cows.
- He is the result of doubling up OCC Easy Red 868A. He also has the influence of our foundation black herdsire Hillfire Legacy 518R who left us with a bunch of really solid cows early on.
- The dam of this bull is a good-uddered cow who has calved first cycle every year. Take a look at this bull. He is solid.

| LOT | 34 | EDIE CREEK EASY 141L | | | | |
|-----------------|--------|---|--------------|--------|----------|------|
| | | TATT00: ECA 141L DOB: May 19 2023 REG#: 2355318 | | | | |
| BORN 1ST CYCLE? | YES | RED OCC EASY RED 868A RED EDIE CREEK 19F RED EDIE CREEK LADY 45B | | | | |
| CALVING EASE | 4 | | | | | |
| UDDER | 3.5 | OCTORARO BALLOT STO 6 MH DIXIE ERICA 664 MH DIXIE ERICA 336 | | | | |
| FLESHING | 3.5 | RED OCC EASY RED RED OCC VANESSA 797Y RED CROWFOOT MOONSHINE 8081U RED CROWFOOT LADY 6503S BALLOT OF BELLADRU OCTORARO GAMMER 203 BASIN Q BAR 163 MH DIXIE ERICA 113 | | | | |
| EPD'S | CED: | BW: -0.4 | WW: 31 | YW: 57 | MILK: 22 | MCE: |
| ACT. DATA | BW: 82 | DAM BW: 71 | DAM WT: 1205 | AOD: 8 | | |

- Heifer bull. Birth weight is a little higher than we normally suggest for heifers but he should work ok due to his long smooth build.
- His dam is a lighter-made cow that has been good and fertile and has a bulletproof pedigree for fertility and longevity.
- Dam has calved in the 1st cycle 6 out of 7 years.

"I met the Bouw family about 10 years ago when they came to look at some of our cattle we had brought up from Monte Howrey in South Dakota. They were very keen and seemed to have a vision for the type of cattle they wanted to breed. Looking at their herd now, I don't think they have lost their vision. With these types of genetics to build the right kind of cow, we can scale our operations without a lot of extra labour and overheads. The result is profit with a good quality of life."

- Gary Richards, Bangor, SK



DDA Emblazon 27C • Maternal Grandsire of Lot 35

| LOT | 35 | EDIE CREEK FULL BORE 31H 8L | | | | |
|-----------------|---------|--|--------------|--------|----------|--------|
| | | TATT00: ECA 8L DOB: April 30 2023 REG#: 2349156 | | | | |
| BORN 1ST CYCLE? | YES | EDIE CREEK FULL BORE 34F EDIE CREEK FULL BORE 31H EDIE CREEK DIXIE ERICA 71B | | | | |
| CALVING EASE | 5 | DDA EMBLAZON 27C EDIE CREEK ERICA 30J MH DIXIE ERICA 621 | | | | |
| UDDER | 4.5 | COLE CREEK FULL BORE 730 O C C DIXIE ERICA 606S EDIE CREEK 839L 298 LEGACY 5Y CROWFOOT DIXIE ERICA 4895P O C C EMBLAZON 854E D D A MELISA 824 MH MH DIXIE ERICA 763 | | | | |
| FLESHING | 4 | | | | | |
| EPD'S | CED: 11 | BW: -0.8 | WW: 48 | YW: 80 | MILK: 22 | MCE: 9 |
| ACT. DATA | BW: 71 | DAM BW: 72 | DAM WT: 1235 | AOD: 3 | | |

- Heifer bull. Here is a really good son of Full Bore 31H. 31H sons were very well received last year with a high selling son going for \$12,100 to Luke Stahl! 31H's dam has the awesome lot 27 bull in the sale, and she is an excellent cow.
- This bull has lots of rib capacity and should decrease the input cost for a set of cows. He tabulates a premium maternal pedigree, with the ideal phenotypical balance derived from having greats such as Legacy & Great Plains (see their stories at the rear of the catalog) as well as the Emblazon & Hunter sires, plus the fantastic 606S donor cow at Edie Creek and the foundation MH Dixie Erica 113 cow in the Howrey Angus herd.

| LOT | 36 | EDIE CREEK FULL BORE 47L | | | | |
|-----------------|--------|---|--------------|--------|----------|--------|
| | | TATT00: ECA 47L DOB: May 06 2023 REG#: 2355134 | | | | |
| BORN 1ST CYCLE? | YES | EDIE CREEK FULL BORE 34F EDIE CREEK FULL BORE 31H EDIE CREEK DIXIE ERICA 71B | | | | |
| CALVING EASE | 4.5 | EDIE CREEK BIG TIME 848C EDIE CREEK ERICA 20J EDIE CREEK 56 ERICA 126D | | | | |
| UDDER | 4 | COLE CREEK FULL BORE 730 O C C DIXIE ERICA 606S EDIE CREEK 839L 298 LEGACY 5Y CROWFOOT DIXIE ERICA 4895P O C C BIG TIME 746Z O C C DIXIE ERICA 693N MH TUBBY 56 EDIE CREEK 518R 51N ERICA 1Y | | | | |
| FLESHING | 4.5 | | | | | |
| EPD'S | CED: 8 | BW: 0.1 | WW: 40 | YW: 66 | MILK: 20 | MCE: 8 |
| ACT. DATA | BW: 70 | DAM BW: 72 | DAM WT: 1165 | AOD: 3 | | |

- Heifer bull. The dam of this bull is a 3/4 sister to the lot 1 bull in this sale. The dam of lot 1 (granddam of 47L) is a huge capacity MH Tubby daughter that is very feminine, and 47L's dam has great potential as a Big Time 848C daughter.
- These Full Bore 31H sons will bring down frame size in your cow herd.



36



MH Mina 029 • Maternal Great Granddam of Lot 38

| LOT 38 | | EDIE CREEK BIG TIME 42L | | TATT00: ECA 42L DOB: May 06 2023 REG#: 2349222 | |
|-----------------|---------|--------------------------------|-------------------------|--|-----------------|
| BORN 1ST CYCLE? | YES | EDIE CREEK BIG TIME 848C | O C C BIG TIME 746Z | | |
| CALVING EASE | 4 | EDIE CREEK BIG TIME 53F | O C C DIXIE ERICA 693N | | |
| UDDER | 4.5 | CROWFOOT VALLEY CJ ERICA 7723T | CROWFOOT MACHO 4549P | | |
| FLESHING | 4.5 | MH TITAN 752 | CROWFOOT KAWICH 1758L | | |
| | | EDIE CREEK MINA 10H | O C C GREAT PLAINS 943G | | |
| | | MH MINA 620 | MH MELISA 357 | | |
| | | | MH | | |
| | | | MH MINA 029 | | |
| EPD'S | CED: 10 | BW: -1.3 | WW: 28 | YW: 47 | MILK: 17 MCE: 8 |
| ACT. DATA | BW: 80 | DAM BW: 69 | DAM WT: 1050 | AOD: 4 | |

- Heifer bull. This bull has some extra curly hair on his neck. He's showing some distinct characteristics of his sire, MH Titan in his head as well.
- We do our best to stack pedigrees with proven cows. Genetics are complicated enough to deal with, so we try to reduce that complication by having as many teenage cows as possible in a pedigree.
- This bulls pedigree is stacked with terrific cows. 693N, 7723T, Melisa 357 & Mina 029 all raised calves to 14yrs of age or more! Dam has calved in the 1st cycle 2 out of 3 years.

| LOT 37 | | EDIE CREEK FULL BORE 99L | | TATT00: ECA 99L DOB: May 13 2023 REG#: 2355108 | |
|-----------------|--------|----------------------------------|-----------------------------|--|-----------------|
| BORN 1ST CYCLE? | YES | EDIE CREEK FULL BORE 34F | COLE CREEK FULL BORE 730 | | |
| CALVING EASE | 3.5 | EDIE CREEK FULL BORE 104J | O C C DIXIE ERICA 606S | | |
| UDDER | 4 | EDIE CREEK DIXIE ERICA 21E | O C C HUNTER 928H | | |
| FLESHING | 4.5 | EDIE CREEK BIG TIME 848C | O C C DIXIE ERICA 606S | | |
| | | EDIE CREEK 56 ELISEVA 21J | O C C BIG TIME 746Z | | |
| | | EDIE CREEK 56 ELISEVA 100C | O C C DIXIE ERICA 693N | | |
| | | | MH TUBBY 56 | | |
| | | | EDIE CREEK 839L ELISEVA 18Y | | |
| EPD'S | CED: 3 | BW: 2.1 | WW: 40 | YW: 68 | MILK: 20 MCE: 2 |
| ACT. DATA | BW: 78 | DAM BW: 79 | DAM WT: 1165 | AOD: 3 | |

- Looking at the 3-generation pedigree as shown here in the catalog, it is hardly possible to stuff any better cows in any of the lines of this pedigree. Each of the cows represented on the right hand column are unquestionably excellent cows.
- Longevity is a lock in the daughters of this bull, as the youngest age that one of these cows retired is age 13! The 21E cow is Jonathan's favorite home raised female, and the injury that 104J sustained was a big disappointment.
- 99L comes from the same cow family as the lot 3 bull. Eliseva 18Y has produced excellent daughters and sons. Dam 21J is off to a great start as she has calved in the 1st cycle 2 out of 2 years.

| LOT 39 | | EDIE CREEK BIG TIME 63L | | TATT00: ECA 63L DOB: May 09 2023 REG#: 2349250 | |
|-----------------|---------|-----------------------------------|----------------------------|--|-----------------|
| BORN 1ST CYCLE? | YES | EDIE CREEK BIG TIME 848C | O C C BIG TIME 746Z | | |
| CALVING EASE | 5 | EDIE CREEK BIG TIME 53F | O C C DIXIE ERICA 693N | | |
| UDDER | 4 | CROWFOOT VALLEY CJ ERICA 7723T | CROWFOOT MACHO 4549P | | |
| FLESHING | 4 | EDIE CREEK FULL BORE 34F | CROWFOOT KAWICH 1758L | | |
| | | EDIE CREEK ENCHANTRESS 99H | COLE CREEK FULL BORE 730 | | |
| | | EDIE CREEK ENCHANTRESS 22D | O C C DIXIE ERICA 606S | | |
| | | | MH TITAN 752 | | |
| | | | EDIE CREEK ENCHANTRESS 25U | | |
| EPD'S | CED: 12 | BW: -1.8 | WW: 37 | YW: 59 | MILK: 18 MCE: 9 |
| ACT. DATA | BW: 71 | DAM BW: 79 | DAM WT: 1325 | AOD: 4 | |

- Heifer bull. Here's a good Big Time 53F son with some extra muscle expression and a low BW.
- His dam is a Full Bore 34F daughter. We did not get many daughters of 34F before injury ended his career. 34F was a maternal brother to our North Star 64H bull out of the great OCC 606S cow that worked until she was 17 here.
- No mediocre cows in this pedigree. The Enchantress 4091P cow was a gorgeous OCC Hunter daughter. Lot 39's dam 99H has calved in the 1st cycle 2 out of 3 times.



39



Edie Creek Big Time 53F • Sire of Lot 40

| LOT | 40 | EDIE CREEK BIG TIME 126L |
|-----------------|----------|--|
| TATTOO: | ECA 126L | DOB: May 16 2023 REG#: 2355320 |
| BORN 1ST CYCLE? | YES | EDIE CREEK BIG TIME 848C EDIE CREEK BIG TIME 53F CROWFOOT VALLEY CJ ERICA 7723T |
| CALVING EASE | 3 | |
| UDDER | 4 | NCC FULL BORE 629 EDIE CREEK FLORA 91H |
| FLESHING | 3.5 | EDIE CREEK 38J FLORA 75Z |

| | | | | | | |
|-----------|--------|------------|--------------|--------|----------|--------|
| EPD'S | CED: 8 | BW: -0.3 | WW: 46 | YW: 74 | MILK: 24 | MCE: 8 |
| ACT. DATA | BW: 78 | DAM BW: 71 | DAM WT: 1385 | AOD: 4 | | |

- If you are looking for a bull out of our program that's carrying a little more frame size, this bull would work for you. Flora cows are bigger framed on their own, and this one is a daughter of a bigger framed Full Bore bull that we used from Wyoming.
- This is the last Big Time 53F son in the sale. Big Time 53F had excellent feet and his dam was an awesome cow that raised 13 calves for us!
- Lot 40's dam Flora 91H was a twin to a bull who is one of the rare female/male twins to have the female be fertile, a pleasant little blessing! She has calved in the 1st cycle 2 out of 3 times so far.



MH Mina 836 • Dam of the Paternal Grandsire of Lot 42

| LOT | 41 | EDIE CREEK TITAN 36L |
|-----------------|---------|--|
| TATTOO: | ECA 36L | DOB: May 05 2023 REG#: 2355115 |
| BORN 1ST CYCLE? | YES | MH TITAN 752 EDIE CREEK TITAN 62G EDIE CREEK BETSY 106C |
| CALVING EASE | 3 | |
| UDDER | 4 | EDIE CREEK ALL STAR 1A EDIE CREEK LYNNE 9J |
| FLESHING | 4 | EDIE CREEK LYNNE 50F |

| | | | | | | |
|-----------|--------|------------|--------------|--------|----------|---------|
| EPD'S | CED: 4 | BW: 1.9 | WW: 39 | YW: 76 | MILK: 19 | MCE: -1 |
| ACT. DATA | BW: 82 | DAM BW: 76 | DAM WT: 1215 | AOD: 3 | | |

- Here is a good bull out of a Titan son. Titan 62G is a full brother to Jaxon's tame 52F cow who is always eager for a scratch! The 9J cow is a neat young cow that has a great pedigree with OCC Legacy, Missing Link and Eureka blended with Sinclair Executive 9XV2.
- Titan set the bar here for longevity for a herd bull. He bred cows until he was 13yrs old. And he didn't get injured, he just wasn't able to convert calories well enough to go through another cold Canadian winter.
- This bull is uniquely bred and noteworthy is his double shot of the elite OCC Karen 759N cow! The dam of 36L, Lynne 9J has calved in the 1st cycle 1 out of 2 times.

| LOT | 42 | EDIE CREEK TUBBY 43L |
|-----------------|---------|--|
| TATTOO: | ECA 43L | DOB: May 06 2023 REG#: 2353395 |
| BORN 1ST CYCLE? | YES | MH TUBBY 56 EDIE CREEK TUBBY 94C EDIE CREEK ML830M FLORA 4Y |
| CALVING EASE | 2 | |
| UDDER | 4 | O C C MISSING LINK 830M EDIE CREEK 80U ERELITE 3A |
| FLESHING | 4.5 | EDIE CREEK ERELITE 80U |

| | | | | | | |
|-----------|--------|------------|--------------|---------|----------|---------|
| EPD'S | CED: 1 | BW: 2.4 | WW: 39 | YW: 65 | MILK: 19 | MCE: -1 |
| ACT. DATA | BW: 87 | DAM BW: 78 | DAM WT: 1290 | AOD: 11 | | |

- We sold the Tubby 94C herd bull to Vee Tee Angus in Lloydminster through this sale years ago. We bought him back to bring the influence of Tubby back into our herd, and chose him because his Flora dam was a winner--she was just culled because of a hip injury at age 13.
- This bull is double bred to OCC Missing Link 830M. He is deep ribbed, stout and comes from a productive dam that calved 1st cycle 8 out of 10 years.
- This pedigree adds up to a lot of easy fleshing lining up on top of a bunch of great cows to make a solid maternal breeding tool.

| LOT | 43 | EDIE CREEK TUBBY 129L |
|-----------------|----------|--|
| TATTOO: | ECA 129L | DOB: May 16 2023 REG#: 2353399 |
| BORN 1ST CYCLE? | YES | MH TUBBY 56 EDIE CREEK TUBBY 94C EDIE CREEK ML830M FLORA 4Y |
| CALVING EASE | 3 | |
| UDDER | 4 | EDIE CREEK BIG TIME 848C EDIE CREEK PRIDE 47G |
| FLESHING | 4 | EDIE CREEK PRIDE 18D |

| | | | | | | |
|-----------|---------|------------|--------------|--------|----------|--------|
| EPD'S | CED: 10 | BW: -1.1 | WW: 26 | YW: 44 | MILK: 18 | MCE: 7 |
| ACT. DATA | BW: 68 | DAM BW: 75 | DAM WT: 1310 | AOD: 5 | | |

- Here is another Tubby son. The Flora 4Y cow just raised her last calf here last year as a 13 yr old cow and the 26J great granddam produced until she was 14!
- The dam of this bull has calved first cycle ever year. The great granddam 5893R holds the record for raising 20 natural calves here in her long career. The Big Time daughters are built to last and they have been a very good addition to our herd.

GENETIC CONSISTENCY DERIVED FROM RELIABLE COW FAMILIES AND THE USE OF LINEBREEDING TO REDUCE THE VARIABILITY IN OUR GENETIC POOL.



MH Melisa 357 • Maternal Great Granddam of Lot 44



MH Frances 186 • Maternal Granddam of Lot 45

| LOT | 44 | EDIE CREEK TUBBY 20L |
|-----------------|--------|--|
| | | TATTOO: ECA 20L DOB: May 03 2023 REG#: 2353393 |
| BORN 1ST CYCLE? | YES | MH TUBBY 56 EDIE CREEK TUBBY 94C |
| CALVING EASE | 2.5 | EDIE CREEK ML830M FLORA 4Y |
| UDDER | 4 | MH TITAN 752 EDIE CREEK TITAN 8G |
| FLESHING | 4 | MH MELISA 509 |
| EPD'S | CED: 9 | BW: -0.9 WW: 24 YW: 40 MILK: 17 MCE: 6 |
| ACT. DATA | BW: 80 | DAM BW: 65 DAM WT: 1195 AOD: 5 |

- Last of the Tubby 94C sons in the sale. He is a little slower maturing. Which we have seen from most of his dam's calves. The 8G cow herself was a slow bloomer as the Titan cattle can be, but they turn into beautiful cows at age 4 or 5.
- Take a look at the ECA 8G cow's pedigree - you will see that she is double bred to Melisa 357, whis is a gorgeous cow as you can see from the picture. The Melisa 509 cow had a son that worked in the Howrey Angus herd until he was 7 this past summer, and we are retaining another son of hers (sired by 53F). Very useful cattle.

| LOT | 45 | EDIE CREEK GATE KEEPER 34L |
|-----------------|---------|---|
| | | TATTOO: ECA 34L DOB: May 05 2023 REG#: 2349215 |
| BORN 1ST CYCLE? | YES | O C C BLUEPRINT 632B O C C GATE KEEPER 678G |
| CALVING EASE | 4.5 | O C C DIXIE ERICA 638D |
| UDDER | 5 | MH EDIE CREEK FRANCES 42F |
| FLESHING | 4.5 | MH FRANCES 186 |
| EPD'S | CED: 14 | BW: -1.8 WW: 29 YW: 52 MILK: 21 MCE: 10 |
| ACT. DATA | BW: 73 | DAM BW: 65 DAM WT: 1225 AOD: 6 |

- Heifer bull. Here is a Gate Keeper son out of the good Frances cow family. ECA 42F is a maternal sister to the dam's of both Lot 2 and Lot 17. We are also using a herd bull in our Howrey Cow herd from a maternal sister to ECA 42F.
- This bull has good feet, he is average in the group for frame size and will do a terrific job improving udders.
- Pictured is the dam 42F as a calf, at the side of her dam who is the excellent Titan daughter MH Frances 186. Frances 186 has 3 daughters with sons in this sale.



46

MH Melisa 1156 • Maternal Granddam of Lot 46



| LOT | 46 | EDIE CREEK GATE KEEPER 125L |
|-----------------|--------|---|
| | | TATTOO: ECA 125L DOB: May 16 2023 REG#: 2349582 |
| BORN 1ST CYCLE? | YES | O C C BLUEPRINT 632B O C C GATE KEEPER 678G |
| CALVING EASE | 4 | O C C DIXIE ERICA 638D |
| UDDER | 5 | LOOKOUT DYNASTY 64Y MH MELISA 63 |
| FLESHING | 4 | MH MELISA 1156 |
| EPD'S | CED: 8 | BW: -0.8 WW: 25 YW: 46 MILK: 19 MCE: 4.5 |
| ACT. DATA | BW: 70 | DAM BW: 70 DAM WT: 1225 AOD: 8 |

- Heifer bull. Our cow herd averages around 1250lbs. The dam of this bull fits the bill of the type of cow that we are trying to populate our herd with. She weighs 1225lbs and has calved first cycle 6 out of 7 years.
- Pictured is the maternal grandma - MH Melisa 1156. She was an excellent cow. She is in the pedigree's for two of our herd bulls in our Howrey Angus cow herd in North Dakota.

VIDEOS OF ALL THE SALE BULLS ARE AVAILABLE!

PLEASE HEAD TO OUR WEBSITE: www.EdieCreekAngus.com FOR LINKS TO THE VIDEOS AND TEAM BIDDING INSTRUCTIONS
If for some reason you are unable to attend the sale, please register to bid on TEAM Auctions (find instructions on page 12), or give us a call if you would like to be on the phone.

| LOT | 47 | EDIE CREEK GATE KEEPER 159L | | | | |
|-----------------|---------|---|---------|--------|----------|----------|
| | | TATT00: ECA 159L DOB: May 24 2023 REG#: 2349691 | | | | |
| BORN 1ST CYCLE? | YES | O C C BLUEPRINT 632B O C C GATE KEEPER 678G | | | | |
| CALVING EASE | 3.5 | O C C DIXIE ERICA 638D | | | | |
| UDDER | 5 | MH MH LUCY 631 | | | | |
| FLESHING | 3.5 | MH LUCY 8122 | | | | |
| EPD'S | CED: 11 | BW: 0.1 | WW: 25 | YW: 48 | MILK: 19 | MCE: 8.5 |
| ACT. DATA | BW: 83 | DAM BW: 80 | DAM WT: | AOD: 8 | | |

- Here is another Gate Keeper son out of a Howrey Angus cow that we brought up as a heifer calf.
- From what we are seeing so far, Gate Keeper is doing a good job of adding some fleshing ability. His daughters are feminine. He typically reduces frame size and the udders are very tidy.

| LOT | 48 | EDIE CREEK GATE KEEPER 167L | | | | |
|-----------------|--------|--|--------------|--------|----------|--------|
| | | TATT00: ECA 167L DOB: May 28 2023 REG#: 2349695 | | | | |
| BORN 1ST CYCLE? | NO | O C C BLUEPRINT 632B O C C GATE KEEPER 678G | | | | |
| CALVING EASE | 2 | O C C DIXIE ERICA 638D | | | | |
| UDDER | 5 | NCC FULL BORE 629 EDIE CREEK DIXIE ERICA 14G | | | | |
| FLESHING | 3.5 | O C C DIXIE ERICA 693N | | | | |
| EPD'S | CED: 3 | BW: 2.6 | WW: 35 | YW: 69 | MILK: 23 | MCE: 2 |
| ACT. DATA | BW: 94 | DAM BW: 72 | DAM WT: 1240 | AOD: 5 | | |

- Having the OCC Dixie Erica 693N cow close up in this pedigree is a very good thing. 693N raised her last calf as a 17yr old cow. And her Big Time 848C son has left us some very good cows.
- Whenever you see the NCC Full Bore 629 bull in a pedigree you can know that the cow is probably a 1/2 frame size bigger than our average cow.
- The Dixie Erica 14G cow has calved in the 1st cycle 3 out of 4 times so far.

| LOT | 49 | EDIE CREEK GATE KEEPER 128L | | | | |
|-----------------|---------|---|--------------|--------|----------|--------|
| | | TATT00: ECA 128L DOB: May 16 2023 REG#: 2349628 | | | | |
| BORN 1ST CYCLE? | YES | O C C BLUEPRINT 632B O C C GATE KEEPER 678G | | | | |
| CALVING EASE | 4 | O C C DIXIE ERICA 638D | | | | |
| UDDER | 3.5 | HERO 6267 OF R R 2418 EDIE CREEK DIXIE ERICA 1E | | | | |
| FLESHING | 4 | O C C DIXIE ERICA 606S | | | | |
| EPD'S | CED: 12 | BW: -0.8 | WW: 31 | YW: 55 | MILK: 21 | MCE: 6 |
| ACT. DATA | BW: 78 | DAM BW: 71 | DAM WT: 1190 | AOD: 7 | | |

- Heifer bull. Why do we talk so much about 1st cycle calving? It is because Reproduction is 5X more important than growth rate and 10X more important than carcass quality when it comes to the cow calf mans profit.
- The dam 1E is a direct daughter of the OCC Dixie Erica 606S cow who produced until age 17 and was the most fertile cow we have had, as well as being very easy fleshing, excellent uddered, and great-footed.
- Here's another bull that was born in the first cycle. From a cow that has calved first cycle every year for 6 years straight!

| LOT | 50 | EDIE CREEK 134L | | | | |
|-----------------|------|---|--------------|--------|-------|------|
| | | TATT00: ECA 134L DOB: May 17 2023 REG#: | | | | |
| BORN 1ST CYCLE? | YES | | | | | |
| CALVING EASE | 2.5 | SHOSHONE FRANZ 419 | | | | |
| UDDER | 3.5 | MH MINA 639 | | | | |
| FLESHING | 3.5 | MH MINA 392 | | | | |
| EPD'S | CED: | BW: | WW: | YW: | MILK: | MCE: |
| ACT. DATA | BW: | DAM BW: 77 | DAM WT: 1320 | AOD: 8 | | |

- We hope to get DNA back before sale day that will determine his sire. We believe he is a OCC Gate Keeper 678G son, but DNA will provide the answer when we get it back.
- Should make a good cow bull that can cover ground. His dam has one of our highest influenced Shoshone pedigrees.
- This bull is not registered because the Mina 639 cow's sire was not eligible to be registered in Canada. 639 has a full sister working in the Howrey Angus herd in ND.



Edie Creek Titan 31E - Purchased by Sirett Ranching

"We drive 12 hours to purchase bulls from Edie Creek for our commercial cow herd, and continue to do so because the cattle have proved themselves that valuable. In our herd, feet and udders are markedly improved and conception rates have been higher since using their bulls: cull ratios are lower. After five years and purchasing 15 bulls, no Edie Creek bull has been culled or lost for any other reason except for injury due to multi- sire fighting. The first Edie Creek bull we purchased - they held the right to buy him back when done with him. We are still not done with him!"

- Sirett Ranching, Lashburn Sask.



52

| LOT | 51 | EDIE CREEK FULL BORE 110L |
|-----------------|----------|--|
| TATTOO: | ECA 110L | DOB: May 14 2023 |
| REG#: | | |
| BORN 1ST CYCLE? | YES | EDIE CREEK FULL BORE 34F EDIE CREEK FULL BORE 104J |
| CALVING EASE | 3 | EDIE CREEK DIXIE ERICA 21E |
| UDDER | 4 | PINEBANK WAIGROUP 41/97 EDIE CREEK MELISA 3J |
| FLESHING | 3.5 | MH MELISA 633 |

| EPD'S | CED: | BW: | WW: | YW: | MILK: | MCE: |
|-----------|--------|---------|--------------|--------|-------|------|
| ACT. DATA | BW: 84 | DAM BW: | DAM WT: 1050 | AOD: 3 | | |

- Smaller framed bull that combines some New Zealand Genetics with Shoshone, Cole Creek & OCC. The dam 3J is a great young cow.
- Melisa 633 was a beautiful, wide-hipped cow that was a favourite of Jonathan's. She sold a fantastic Titan son to Kody Aesoph in S.D., and has some great daughters in the Edie Creek herd.
- Please make sure you head to our website and follow the link to view Videos of all the sale bulls.

| LOT | 52 | EDIE CREEK NORTH STAR 150L |
|-----------------|----------|--|
| TATTOO: | ECA 150L | DOB: May 21 2023 |
| REG#: | 2359872 | |
| BORN 1ST CYCLE? | YES | EDIE CREEK GREAT ONE 77F EDIE CREEK NORTH STAR 64H |
| CALVING EASE | 2 | O C C DIXIE ERICA 606S |
| UDDER | 4 | O C C WORTHY MAN 967W EDIE CREEK 34U CAROLINE 10A |
| FLESHING | 4 | EDIE CREEK CAROLINE 34U NHC |

- Here's a really nice cow bull. The Caroline cow family is known to be one of our very best for udder quality and they pass it on.
- Great Longevity here with Caroline 10A calving 9 out of 10 times in the 1st cycle, and she is pregnant again with her 11th calf now. The dam of North Star 64H had a long career of popping early-born calves here until she was 17yrs old.
- We believe if you can combine great fertility with a low input management system, that gives the cow-calf producer the best chance at optimizing profitability.

| LOT | 53 | EDIE CREEK NORTH STAR 83L |
|-----------------|---------|---|
| TATTOO: | ECA 83L | DOB: May 12 2023 |
| REG#: | 2355139 | |
| BORN 1ST CYCLE? | YES | EDIE CREEK GREAT ONE 77F EDIE CREEK NORTH STAR 64H |
| CALVING EASE | 5 | O C C DIXIE ERICA 606S |
| UDDER | 5 | EDIE CREEK BIG TIME 848C EDIE CREEK DIXIE ERICA 13G |
| FLESHING | 3.5 | EDIE CREEK DIXIE ERICA 71B |

- Heifer bull. Here is a light birthweight bull. His maternal brother was a popular bull last year that sold for \$11,000. The maternal grand dam was a perfect cow for us, and her last calf is the excellent Lot 27 bull in the sale.
- When you are looking to buy a bull to improve maternal traits in your cowherd, the cows that stand behind that bull are the most important thing to have good knowledge of. Please give us a call if you would like to talk through the sale offering and get more details about the bulls!
- Dam Dixie Erica 13G has calved 3 out of 4 times in the 1st cycle.



| LOT | 54 | EDIE CREEK MISSING LINK 29L |
|-----------------|---------|---|
| TATTOO: | ECA 29L | DOB: May 04 2023 |
| REG#: | 2349199 | |
| BORN 1ST CYCLE? | YES | O C C HEADLINER 661H O C C MISSING LINK 830M |
| CALVING EASE | 4 | O C C DIXIE ERICA 946K |
| UDDER | 4 | EDIE CREEK GREAT ONE 79Y EDIE CREEK BARBARA 28F |
| FLESHING | 4 | MH BARBARA 646 |

| EPD'S | CED: 12 | BW: -2.4 | WW: 33 | YW: 53 | MILK: 20 | MCE: 5 |
|-----------|---------|------------|--------------|--------|----------|--------|
| ACT. DATA | BW: 69 | DAM BW: 60 | DAM WT: 1080 | AOD: 6 | | |

- Heifer bull. OCC Missing Link 830M son that should work on heifers. Missing Link has been the biggest changer bull we have ever used in terms of putting fleshing ability into a gene pool.
- 28F, the dam of Lot 54 is a daughter of the Great One 79Y bull who consistently improved the cows he made over their mothers.
- 28F has calved in the 1st cycle 4 out of 5 times.

OCC Missing Link 830M • Sire of Lot 54

SEMEN LOTS



OCC LEGACY 839L



LEGACY DAUGHTER



OCC MISSING LINK
830M



OCC HEADLINER -
SIRE OF MISSING
LINK



OCC Eureka 865E -
Sire of OCC Magnum
749M



OCC JUANADA 775C

- S1 – 2 straws of OCC Legacy 839L
- S2 – 2 straws of OCC Legacy 839L
- S3 – 2 straws of OCC Missing Link 830M
- S4 – 2 straws of OCC Missing Link 830M
- S5 – 2 straws of OCC Magnum 749M
- S5 – 2 straws of OCC Magnum 749M

LOT S1-S2 OCC LEGACY 839L

TATTOO: 839L DOB: Sept. 09 2001 REG#: 14181939

D H D TRAVELER 6807
O C C ECHELON 857E
DIXIE ERICA OF C H 1019

O C C ANCHOR 771A
O C C DIXIE ERICA 960E
O C C DIXIE ERICA OF R R 4345

Q A S TRAVELER 23-4
BEMINDFUL MAID D H D 0807
PBC 707 1M F0203
DIXIE ERICA OF C H 615
D H D TRAVELER 6807
O C C JUANADA 709V
SHOSHONE VANTAGE JB23
DIXIE ERICA OF R R 9275

| EPD'S | CED: 9 | BW: 1.2 | WW: 31 | YW: 60 | MILK: 22 |
|-------|--------|---------|--------|--------|----------|
|-------|--------|---------|--------|--------|----------|

- 839L is one of the most phenotypically correct bull that we've seen, and was especially athletic and masculine—he still moved like a big cat at the age of 10!
- Legacy was a masculine, hormonally-balanced, athletic breeding machine that duplicates his own type and breeding ability (libido) in his sons. He also leaves broody, deep, easy fleshing cows.
- We have been fortunate to walk several sons in our pastures, and will continue to use him in our A.I. program.
- Sire Echelon is a son of the great Dixie Erica of CH 1019 cow, the OCC matron of Emblazon, Focus, Great Plains and many foundational OCC sires. Having lived until age 21, she set the bar for longevity, productivity, and had one of the most refined udder structures of any Angus cow.

LOT S3-S4 OCC MISSING LINK 830M

TATTOO: 830M DOB: Sept. 16 2002 REG#: 14456399

O C C EMBLAZON 854E
O C C HEADLINER 661H
O C C JUANADA 858F

O C C GLORY 950G
O C C DIXIE ERICA 946K
O C C DIXIE ERICA 816B

D H D TRAVELER 6807
DIXIE ERICA OF C H 1019
BASIN RAINMAKER 654X
O C C JUANADA 709V
O C C EXODUS 712E
O C C DIXIE ERICA 971E
D H D TRAVELER 6807
DIXIE ERICA OF C H 1019

| EPD'S | CED: 8 | BW: -0.3 | WW: 45 | YW: 74 | MILK: 22 |
|-------|--------|----------|--------|--------|----------|
|-------|--------|----------|--------|--------|----------|

- This is a changer bull. If you want to add fleshing ability & muscle, plus reduce frame size in one mating, Missing Link can do that for you.
- We have some excellent Missing Link cows that have worked in our herd, and have had some very good-looking sons, including the Edie Creek All Star 1A bull who sold to Frederic Gouin in Quebec.
- "Missing Link was our pick of his calf crop and he is not letting us down. He is long, clean, thick, smooth and stylish... Sired by the great proven Argentine AI sire OCC Headliner 661H and out of a beautiful Glory daughter whose dam is 816B (Emblazon's full sister)." - Tim Ohlde

LOT S5-S6 OCC MAGNUM 749M

TATTOO: 749M DOB: March 26, 2002 REG#: 14348019

O C C BACKSTOP 888B
O C C EUREKA 865E
BLACKBIRD OF R R 1204

O C C CORNERSTONE 890C
OCC JUANADA 818E
O C C JUANADA 775C

D H D TRAVELER 6807
REVOLUTION ROSE OF R R 9239
PBC 707 1M F0203
BLACKBIRD OF R R 7023
D H D TRAVELER 6807
ROLLIN ROCK BLACKBIRD 1304
N BAR EMULATION EXT
O C C JUANADA 709V

| EPD'S | CED: 8 | BW: -0.3 | WW: 45 | YW: 74 | MILK: 22 |
|-------|--------|----------|--------|--------|----------|
|-------|--------|----------|--------|--------|----------|

- Magnum has a neat OCC pedigree that brings in some old proven cows: Blackbird of RR 1204 was a pathfinder F0203 daughter, and OCC Juanada 775C is a beautiful maternal sister to OCC Anchor, that is sired by EXT! She went past 17 years.
- His Sire is OCC Eureka 865E. Eureka is a Pathfinder son of one of Tim Ohlde's foundation females Blackbird of RR 1204 who is sired by PBC 707 1M F0203.
- Eureka is triple bred to the great PBC 707 1M F0203.
- "The Dam of Eureka - Blackbird of RR 1204, was a Pathfinder cow that produced 10 calves with an average weaning ratio of 110 and 10 yearlings with an average ratio of 107." - Tim Ohlde
- The Crowfoot 7723T cow who worked here until she was 14 and contributed so much to our program, was a granddaughter of the Magnum bull through her sire Crowfoot Macho 4549P, who we also got a couple of excellent bulls from early on.

TERMS & CONDITIONS

BULL DEVELOPMENT: These bulls have been raised on their mothers milk and grass. For their first winter they grazed cover crop at the side of their dams until the beginning of December when they started corn grazing. They were weaned mid January 2024. At this point they were brought home and fed grass seed screenings, and some corn silage. Their hay rings had either hay or green feed bales. In May of 2024 they were turned out to pasture, with no supplements, where they grew on grass until the end of October. We started giving them silage bales at this time. Bulls are fed with the goal of developing them into hard muscled bulls, not chubby, soft, doughboys! Starting in mid November of 2024 they were fed some corn silage along with sunflower screenings and a protein supplement because we think we have been short on protein in the past. They also get calcium and minerals in the wagon load. Hay or green feed silage bales in their rings. As you will see, they have not been pushed with hard feed to ensure that they breed longer for you.

THE BULL PROGRAM: Bulls can be kept at Edie Creek Angus for no feed charge until April 1st. After that it will be \$2.5/day until May 1st. After that the cost will be \$3/day. Free delivery available in Manitoba. If you take your bull home on sale day we will give you a \$50 discount on each bull. We strongly recommend that you purchase insurance on any bulls returning to our yard after the sale. We are not responsible for any un-insured injuries that occur before the bull is delivered.

TERMS AND CONDITIONS: The terms of sale are by cash or cheque. Settlement to be made immediately after the completion of the sale. The right of property will not pass until after settlement is made. Bulls will not be released until settlement is made.

BIDS: Every animal in the sale will be sold to the highest bidder and may be subject to a minimum/reserve bid.

DISPUTES: In case of disputes, bidding will be re-opened between the parties involved. If no further bid is made, the buyer will be the person from whom the auctioneer accepted the last bid. The auctioneer's decision on all disputes is final.

ANNOUNCEMENTS AND CHANGES: All announcements and changes made from the auction block will take precedence over the printed matter in this catalogue. Buyers are therefore cautioned to pay close attention to any such announcements.

PURCHASER'S RISK: Each animal becomes the risk of the purchaser as soon as the auctioneer's hammer falls for the final time.

LIABILITIES: All persons attending the sale do so at their own risk and sellers assume no liability, legal or otherwise, for any accidents occurring in or about the premises.

GUARANTEE: The Bulls have been evaluated for breeding soundness and semen quality by Beausejour Animal Hospital. We guarantee to provide you with a sound, fertile bull at the point of sale. Should your bull fail to be a satisfactory breeder in his first breeding season, he will be replaced with a bull of equal value or a credit will be given towards the purchase of another bull. We will not provide the replacement or credit for a bull that is physically injured or mismanaged. It is the responsibility of the buyer to insure their bulls if desired.

CANADIAN DELIVERIES: For our Canadian customers outside of Manitoba we will assist in covering the trucking bill. You pay the first \$250/bull, and we will cover the rest. Delivery in Manitoba is free.

USA DELIVERIES: Bulls selling into the USA will be charged an additional \$250 CDN/bull to cover export testing fees. We will assist with arrangements for the bulls to be shipped to wherever you are in the United States at the buyer's cost. HS Knills is the trucking company we have used in the past. Contact them to get an idea of what the brokerage and trucking costs will be.

INSURANCE: The animal becomes the responsibility of the purchaser as soon as it is sold. Please purchase insurance on your bull, if that is a risk you would like to mitigate.

1ST RIGHT OF REFUSAL BULLS: Edie Creek Angus reserves the right (but might choose not to exercise the right) to have the first opportunity to buy the bull back from you when you are finished with him.



CANALIX

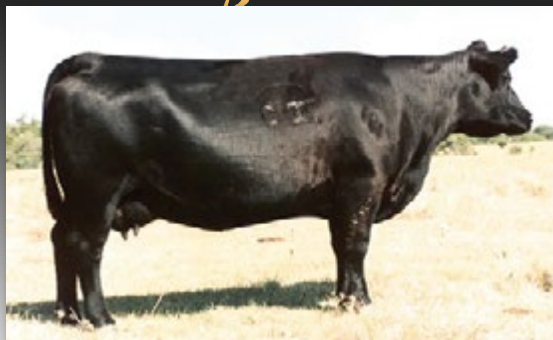
CANADA LICK BLOCKS LTD.

FOUNDATION GENETICS

at Edie Creek Angus



N Bar Emulation EXT • Sire of OCC Great Plains 943G



Dixie Erica of CH 1019 • Dam of OCC Great Plains 943G and Paternal Granddam of OCC Legacy 839L



OCC Great Plains 943G



OCC Dixie Erica 907C • Full Sister to Great Plains



MH Titan 752 • Son of OCC Great Plains 943G



OCC Dixie Erica 693N • Daughter of OCC Dixie Erica 907C

OCC Great Plains and OCC Dixie Erica 907C can be found in almost all the pedigrees of our cow herd. In the words of Tim Ohlde, "Great Plains excels his sire (N Bar Emulation EXT) in every EPD", from carcass merit to growth, and his daughters are structurally correct, highly fertile cows with great mothering instincts. Many breeders who focused on maternal quality used Emulation back on Traveler bred cattle with great success. Our goal was to maintain maternal aspects & longevity, which is why we pursued the Great Plains line - keeping with the Dixie Erica 1019 cow (dam of many great OCC bulls) which we could trust. MH Titan & ECA Great One 79Y were both excellent sons of OCC Great Plains. Donor Dam 693N is a great example of longevity, fertility & structural correctness. She is now 18, her dam 907C was 19 and great grand dam 1019 made it to 21!

**"WE ARE STACKING PROVEN BLOODLINES THAT
HAVE PRODUCED PROBLEM-FREE INTO THEIR
TEENS TO PRIORITIZE FERTILITY AND LONGEVITY!"**



OCC Echelon 857E • Sire of OCC Legacy 839L



OCC Legacy 839L



**ECA 64B • Daughter
of OCC Legacy 839L**



**ECA 66W • Daughter
of OCC Legacy 839L**



**ECA 5Y • Son of
OCC Legacy 839L**

OCC Legacy 839L was truly the foundation of the Edie Creek Program. He was owned by Crowfoot Cattle Co, Hillfire Angus, and B.B.A.R., they bought him and collected semen on him. Legacy was a masculine, hormonally balanced, athletic breeding machine that duplicates his own type in his sons, and leaves broody, deep, easy fleshing cows. We were fortunate to walk several sons in our pastures, as well as use him in our A.I. program. Sire Echelon is a son of the great Dixie Erica of CH 1019 cow, the OCC matron of Emblazon, Focus, Great Plains and many foundational OCC sires. Having lived until age 21, she set the bar for longevity, productivity, and had one of the most refined udder structures of any Angus cow. You will also find the Dixie Erica of CH 1019 cow in our Red Angus cattle. The pedigree of our OCC Easy Red 868A bull has 1019 in it 9 times. We plan on turning back to OCC Legacy in the near future for our herd.



MATERNAL PERFORMANCE

Cows whose genetic background has focused on increasing size and gain every generation will not produce the most functionally efficient females in a forage-based system.

Having an efficient, moderate maternally-oriented cowherd is an important basis for profitable beef production on grass, especially in a drought scenario when Nature is exerting extreme pressures. This beef-production "Factory" that excels in Maternal traits can be bred to any combination of maternal or terminal sires to produce the kind of calves desired... Maternal performance is measured by more than weights and EPD's:

HARDINESS & REPEATABILITY/CONSISTENCY: We stack proven cows in our pedigrees that have raised calves fault free into their teens. Linebreeding to these cows will bring predictability & uniformity.

FERTILE & FUNCTIONAL: 81% of this year's sale bulls were born in the first cycle. – Their parents are succeeding under the selection pressure we are applying by way of a short breeding season & the competition factor of multi-sire breeding groups.

PASTURE CALVING: Calving on pasture in May without night-checks or close supervision means that calving ease & maternal instincts need to be automatic in our herd.

SOUND & CORRECT: Breeding stock are selected only if they and their ancestors have excellent foot and udder structure.

HIGH STANDARDS: Our cows extensively graze throughout the winter and nurse their calves for 8-10 months before they are weaned. Our cow herd is a hard-working group of employees that are hired to improve soil health and benefit the ecosystem.

Again, 81% of the, 2023 calf-crop were born in the first 30 days of Calving season, and that is done with a cow herd that grazes until the end of December on pasture with their calves at side.

**"OPTIMIZING PROFIT WITH
MATERNAL EFFICIENCY."**

- Darwin Gork



**59018 STONERIDGE RD
ANOLA, MB R5L 0H9**

**TIME SENSITIVE MATERIAL.
PLEASE DELIVER IMMEDIATELY**



Selling

54 RUGGED 2 YEAR OLD BULLS

44 Black Angus • 7 Red Angus • 3 Black/Red Carriers

OCC SEMEN

*18th Annual
Bull Sale*

MARCH 8, 2025

SALE TIME: 1 P.M. CST

59018 Stoneridge Rd, Anola, Manitoba